

SPA
Abyss
professional line



Palena Biocosmetics

"PALENA BIOCOSMETICS" Ltd Nicosia • Cyprus
Telephone: (+357) 22 624910 • (+357) 22 314107 • Fax: (+357) 22 624940
Email: palena@palena.com.cy • Web: www.palena.com.cy



Harmony of Science and Nature





HARMONY OF SCIENCE AND NATURE

SPA ABYSS

Professional series of cosmetics based on the scientific medical approach to cosmetology with maximum use of natural components and high technologies

The great variety of cosmetics permits to select the individual program for each client and solve many cosmetic problems, including such complicated ones as wrinkle correction, blackheads in its heaviest appearances, skin cicatrical changes after acne, cellulite and many other things.

SPA Abyss series also offers programs for SPA-salon of faces and body care.

Cosmetics are low-molecular and affect at three levels: surface, endemic and cellular. The high percentage of active substances provides regeneration and correction of tissue processes. The effect from procedures is noticeable after their first application, and regular use provides guaranteed stable result. Cosmetics do not cause habituation effect, each product of the series includes target therapeutic intervention on skin, and their structure actually excludes negative effect on body and skin.

All abovementioned is reached due to strict control of products quality, their safety and compliance to accepted international standards. Doctor of Medicine, dermatologist-cosmetologist Mr. Charalambous Charalambous - president of Palena Bicosmetics company producing SPA Abyss cosmetic line is in charge of development of separate products and complex therapies of SPA Abyss cosmetic line.

The Company has several years already held the certificate ISO 9001 confirming high-technology and quality of manufactured products.

Competitive prices for products compare favorably the professional series SPA Abyss, as well as low prime cost of procedures and availability of patented unique therapeutic preparations and complex therapies.

The brand develops dynamically, permanently supplementing the collection with new products and complex therapies.

Besides cosmetics for professionals SPA Abyss series includes great variety of products for home care within the intercourse period and thereafter, for all ages and all skin types. It is highly economical and easy-to-use.



CONTENTS

Professional therapies and complex programs

| | |
|--|-------|
| Program of Oily and Combination Care..... | 2-3 |
| Procedures for problem Skin “Comedogene Stage of Acne” | 4-5 |
| Treatment of Acne Complicated by Consecutive Infection..... | 6-7 |
| Phyto Peeling "Program of Skin Deep Peeling"..... | 8-11 |
| Oxygen aromatherapy..... | 12-13 |
| Glycol acid peeling..... | 14-15 |
| Depigmenting program with vitamin C..... | 16-17 |
| Program “Anticuperose, Anti-Stress and Antioxidant” | 18-19 |
| Hydro-tonic express-program “Mediterranean breeze” | 20-21 |
| Peptide non-operating lifting..... | 22-23 |
| Reviving therapy for skin around eyes..... | 24-25 |
| Intensive therapy “Revitalization, nutrition and moistening” | 26-27 |
| Bioactive Anti-age Ionotherapy “Golden glow” | 28-29 |
| SPA Procedure for Face Skin “Chocolate Delight” | 30-31 |
| SPA Procedure “Chocolate Body Lifting” | 32-33 |
| Thermoactive Anti-cellulite Program..... | 34-35 |
| Express Program “Hand and Feet Skin Care” | 36 |

Professional Products and their characteristics

| | |
|------------------------------------|-------|
| Make-up removers..... | 37 |
| Skin deep cleansing cosmetics..... | 37-38 |
| Lotions and toners..... | 38 |
| Massage cosmetics..... | 39 |
| Masks..... | 39-41 |
| Concentrates and sera..... | 41-42 |
| Peeling cosmetics..... | 43 |
| Face care creams and gels..... | 43-44 |
| Eyelid skin care cosmetics..... | 45 |
| Sun-protection cosmetics..... | 45-46 |
| Body care cosmetics..... | 46-48 |

PROGRAM OF OILY AND COMBINATION SKIN CARE

Indications for application:

Hyperactivity of adipose glands, single papulopustular eruptions, enlarged pores, atonic complexion.

Program tasks:

- normalize activity of adipose glands;
- activate the process of renewal of keratic cells;
- initiate metabolism and microcirculation;
- prevent and stop available inflammatory process of skin;
- provide antibacterial action;
- smooth the relief and improve complexion.

Recommendations on the course of procedures:

Course: The procedure is carried out in 1-2 days till achievement of the effect, but preferably not more than 10 times.

Number of courses: 2 times per year (according to indications).

Supporting procedures: 1 time per 2 weeks.

As "emergency care" the program can be used as an independent single procedure.

Counter-indications: cuperose.

Applied cosmetics:

- Enzymatic Cleansing Gel
- Pearl Buffing Cream
- Botanical Clarifying Astringent
- Pro Cleansing Gel Mask
- Calming Massage Phyto Milk
- Balancing Phyto Serum
- Biomineral Cleansing Mask
- DNA Anti-ageing Mask
- Oil Control Phyto Gel

Home Care:

- Enzymatic Cleansing Gel
- Pearl Buffing Cream
- Botanical Clarifying Astringent or Vita Mineral Toner
- Intensive care
- Biomineral Cleansing Mask or DNA Anti-ageing Mask
- Oil Control Phyto-Gel
- Oil Free Corrective Cream SPF 25



TREATMENT PROCEDURE:

- 1. Makeup removal:** Remove decorative cosmetics by means of cotton buds and pads, using **Make-Up Remover Gel**. Then apply **Enzymatic Cleansing Gel** to face, neck, decollete area and massage skin lightly by fingertips within 1-2 minutes. Wash off by watered sponges.
- 2. Deep cleansing (exfoliation):** Apply cream for deep cleansing **Pearl Buffing Cream** uniformly to face skin, neck and decollete area. Make manual peeling-massage within 2-3 minutes. Remove the remains of cream by watered sponges.
- 3. Preparation of skin to mechanical cleansing:** Carried out in case if there are indications for abstraction. Apply the thin layer of **Pro-Cleansing Gel Mask** to the face skin. To create sauna effect cover the face with food film with holes for patient's breathing (mouth and nose) and warm towels. In 10-15 minutes remove the gel gradually. Carry out mechanical cleansing.
- 4. Extraction:** Removal of pimples, miliums, pores cleansing. At the end of the procedure clean the skin with the lotion **Botanical Clarifying Astringent**.
- 5. Activation:** Apply 1ml (1/4 of ampoule) of **Balancing Phyto Serum** to the face skin and beat in by fingertips.
- 6. Massage:** Make delicate massage by Jacque within 5-6 minutes. When massage is completed, make darsonval by the contact method. Wash the massage cream off by wet sponges and clean the skin with the lotion **Botanical Clarifying Astringent**.
- 7. Special procedure:** Select one of two masks according to the state of patient's skin:
 - Biominerale Cleansing Mask or
 - DNA Anti-Ageing MaskApply the dense layer of mask to the face. After complete drying of the mask, remove it by wet sponges and clean the skin with the lotion Botanical Clarifying Astringent.
- 8. Repeated activation:** Apply 1ml (1/4 of ampoule) of **Balancing Phyto Serum** to the face skin and beat in by fingertips.
- 9. Protection:** Apply to the face and neck skin **Oil Control Phyto Gel**.



PROCEDURES FOR PROBLEM SKIN COMEDOGENE STAGE OF ACNE

Indications for application: primary stage of acne within the period of sexual maturation, so called “common acne”.

Program tasks:

- normalize activity of adipose glands;
- provide antibacterial action;
- decrease hyperkeratosis follicularis;
- prevent development of complications.

Recommendations on the course of procedures: repeat each 1-2 days till achievement of clinical effect.
As “emergency help” the program can be used as an independent single procedure.

Consultations: before beginning of the course it's necessary to consult dermatocosmetologist, gynecologist, endocrinologist, and therapist.

Applied cosmetics:

- Enzymatic Cleansing Gel
- Foaming Phyto Peel
- Botanical Clarifying Astringent
- Pro Cleansing Gel Mask (PH 10)
- Balancing Phyto Serum
- Calming Massage Phyto Milk
- Antiseptic Clay Mask or Active Anti-Acne Mask
- Botanical Anti-Acne Cream

Home Care:

- Enzymatic Cleansing Gel;
- Foaming Phyto Peel;
- Botanical Clarifying Astringent.
- Oil Control Phyto Gel;
- Botanical Anti-Acne Cream.
- Antiseptic Clay Mask
- Blemish Fix Applicator.



TREATMENT PROCEDURE

- 1. Cleansing:** Remove decorative cosmetics by means of cotton buds and pads, using **Make-Up Remover Gel**. Then apply **Enzymatic Cleansing Gel** to face, neck, decollete area and massage skin lightly by fingertips within 1-2 minutes. Wash off by watered sponges.
- 2. Deep cleansing:** Apply uniformly **Foaming Phyto Peel** for problem skin to the face skin. Make delicately manual peeling-massage within 2-3 minutes, having watered fingertips previously. Wash off by watered sponges.
- 3. Prepare the skin by mechanical cleaning:** Apply thin layer of **Pro-Cleansing Gel Mask** to the face skin. To create sauna effect cover the face with food film and warm towels. In 10-15 minutes start to abstract pimples, gradually removing the gel. In the course of mechanical cleansing it's necessary to clean the treated areas with antiseptic lotion **Botanical Clarifying Astringent**.
- 4. Massage:** Make delicate massage by Jacque within 7-10 minutes with **Calming Massage Phyto Milk**. Remove the remains of the preparation by water and clean with the lotion **Botanical Clarifying Astringent**.
- 5. Activation:** Apply 1ml (1/4 of ampoule) of **Balancing Phyto Serum** to the face skin and beat in by fingertips. Ionophoresis can be used (on positive electrode).
- 6. Special procedure:** Apply one of two masks to the face skin:
 - Antiseptic Clay Mask** (5g) with cool water or herb tea to liquid sour cream consistency. Apply uniformly to the face skin.
 - **Active Anti-Acne Mask** (5g) with boiling water to liquid sour cream consistency, infuse it within 5 minutes. Apply warm mask to the face and leave for 10-15 minutes. Carry out darsonval by the contact method over the dried mask. Wash off the remains of mask by sponges. Clean the face with **Botanical Clarifying Astringent**.
- 7. Protection:** Apply **Botanical Anti-Acne Cream** to the face and neck skin.



TREATMENT OF ACNE COMPLICATED BY CONSECUTIVE INFECTION (PAPULOPUSTULAR AND PHLEGMONOUS STAGE)

Program tasks:

- stop inflammatory reactions;
- decrease hyperkeratosis follicular is;
- normalize functions of adipose glands;
- restoration of infiltrates and deep cleansing of pores;
- initiate processes of skin regeneration;
- smoothing of skin relieves.

Recommendations on the course of procedures:

Repeat each 1-2 days till achievement of clinical effect.

Consultations: before beginning of the course it's necessary to consult dermatocosmetologist, gynecologist, endocrinologist, and therapist.

Applied cosmetics:

- Enzymatic Cleansing Gel
- Foaming Phyto Peel
- Botanical Clarifying Astringent
- Pro-Cleansing Gel Mask
- Balancing Phyto Serum
- Calming Massage Phyto Milk
- Phyto Peeling Mask
- Active Phyto Complex
- Anti-Stress Bio Complex
- Vita Pure Essential Mask
- Botanical Anti-Acne Cream
- Oil Free Corrective Cream SPF 25

Home Care:

- Enzymatic Cleansing Gel;
- Foaming Phyto Peel;
- Botanical Clarifying Astringent;
- Antiseptic Clay Mask; or Active Anti -Acne Mask.
- Botanical Anti-Acne Cream;
- Oil Control Phyto Gel;
- Oil Free Corrective Cream SPF 25;
- Blemish Fix Applicator



PAPULOPUSTULAR STAGE OF ACNE



PHLEGMONOUS STAGE OF ACNE



TREATMENT PROCEDURE:

- 1. Cleansing:** Remove decorative cosmetics by means of cotton buds and pads, using **Make-Up Remover Gel**. Then apply **Enzymatic Cleansing Gel** to face, neck, decollete area and massage skin lightly by fingertips within 1-2 minutes. Wash off by watered sponges and clean the skin with **Botanical Clarifying Astringent**.
- 2. Deep cleansing:** Apply uniformly **Foaming Phyto Peel** for problem skin to the face skin. Make delicately manual peeling-massage within 2-3 minutes, having watered fingertips previously. Wash off by watered sponges and clean the skin with **Botanical Clarifying Astringent**.
- 3. Skin preparation to mechanical cleansing:** Carried out in case of indications for abstraction.
Apply thin layer of **Pro-Cleansing Gel Mask** to the face skin. To create sauna effect cover the face with food film and warm towels. In 10-15 minutes start to abstract pimples, gradually removing the gel. In the course of mechanical cleansing it's necessary to clean the treated areas with antiseptic lotion **Botanical Clarifying Astringent**.
The procedure is not carried out in case of phlegmonous stage of acne!
- 4. Massage:** Make delicate massage by Jacque within 7-10 minutes with **Calming Massage Phyto Milk**. Remove the remains of the preparation by water and clean with the lotion **Botanical Clarifying Astringent**.
- 5. Activation:** Apply 1ml (1/4 of ampoule) of **Balancing Phyto Serum** to the face skin and beat in by fingertips. Ionophoresis can be used (on positive electrode).
- 6.1. Special procedure:**
Protect eyelid skin and eyebrows with **Anti-Irritant Cream**. Apply uniformly a thin layer of **Phyto Peeling Mask** by means of the applicator to the face skin and other areas affected by acne (neck, breast, back). Within 1-5 minutes, depending on the damage degree and skin sensitivity, rub the preparation into skin by fingertips (it's necessary to wear gloves). Keep the preparation on the skin fir 5-10 minutes. Then remove it by means of paper towels or wet sponges. At the end of the procedure clean the skin with **Botanical Clarifying Astringent**.
- 6.2. Special procedure:** Carried out only in case of phlegmonous acne!
Apply some drops of **Anti-Stress Bio Complex** and beat it into the skin by "fingertip shower".
Protect eyelid skin and eyebrows with **Anti-Irritant Cream**. Apply uniformly a thin layer of **Active Phyto Complex** by means of the applicator or hands protected by gloves to the problem skin. Depending on the damage degree and skin sensitivity keep the preparation within 5-20 minutes. Remove by paper towels or wet sponges. Clean the skin with **Botanical Clarifying Astringent**.
- 6.3. Special procedure:** Apply uniformly a dense layer of the sedative mask **Vita Pure Essential Mask** where the previous procedures have been held.
After complete drying of the mask, remove it by water. At the end of the procedure clean the skin with **Botanical Clarifying Astringent**.
- 7. Protection:** Apply **Botanical Anti-Acne Cream**, and as masking of red skin, especially during the hours of the active sun, in addition - **Oil Free Corrective Cream SPF 25**.



PHYTO PEELING

PROGRAM OF SKIN DEEP PEELING

The program can be carried out only by the certified cosmetologist with medical education.

Indications for application:

- cicatricial changes of skin after acne;
- hyperkeratinization and enlarged pores;
- dyschromia against hyperkeratinization;
- skin rejuvenation.

Program tasks:

- update keratin layer of the epidermis;
- the restoration and revitalization of all physiological processes in the dermis;
- activation of collagen and elastin synthesis;
- smoothing of skin relief.

Recommendations on the course of procedures:

- The procedures are carried out every day within 3-4-5 days depending on the problems and skin type. Then there should be a 2-day break, and thereafter the final procedure should be carried for peeling of the dried layer of epidermis.
- The therapies are carried out only in autumn-winter period.

Counter-indications

- skin inflammation of any etiology;
- open scratches and wounds;
- numerous and, especially, black moles (nevus);
- cuperose;
- pregnancy and lactation.

Applied cosmetics:

- Anti-Irritant Lotion
- Activator
- Phyto Peeling Mask
- Anti-Stress Bio Complex
- Active Phyto Complex
- Anti-Irritant Mask
- Anti-Irritant Cream
- Sun Protective Gel SPF 30



TREATMENT PROCEDURE:

1st day:

1. Clean the skin with Anti-Irritant Lotion, apply a thin layer of **Anti-Irritant Cream** and carry out vaporization procedure within 10-15 minutes. Dry up the skin with paper towels and clean it with the **Anti-Irritant Lotion**.
2. Apply **Anti-Irritant Cream** to eyelids, eyebrows, lips and nasolabial folds.
3. Moisten a cotton pad with Activator lotion (the hands should be protected by gloves) and quickly clean the face skin beginning from the brow, cheeks, nose and chin. The patient fans the face till burning sense disappears. Repeat the procedure 3-5 times. During each cleaning every cotton pad should be moistened heavily with the lotion, but the lotion should not spread over the face. Finish this stage by cleaning of skin with **Anti-Irritant Lotion**.
4. Apply several drops of soothing and cooling serum **Anti-Stress Bio Complex** and rub it into the skin.
5. Apply a uniform layer of **Phyto Peeling Mask** and rub it into the skin strongly within 5 minutes. Keep application of the preparation during other 10-15 minutes. Then remove it carefully by paper towels or wet sponges. Clean the skin with calming **Anti-Irritant Lotion**.
6. Apply again several drops of serum **Anti-Stress Bio Complex**.
7. Apply a thin layer of **Active Phyto Complex** uniformly, keep it for 30 minutes. Then remove it by paper towels or wet sponges. Clean the skin with calming **Anti-Irritant Lotion**.
8. Apply calming **Anti-Irritant Mask**. Remove the dried mask by water in 15-20 minutes and clean the skin with **Anti-Irritant Lotion**.
9. Apply calming **Anti-Irritant Cream**. During hours of the active sun protect additionally the skin with sun-protection preparation **Sun Protective Gel SPF 30**.

2nd day: the procedure is carried out so as during the first day with a small difference:

- No vaporization is carried out, and right after cleaning of the skin with the lotion and application of the protective cream layer to sensitive areas, clean the skin with **Activator lotion**;
- Number of cleanings with **Activator lotion** increases to 7-9 times;
- **Phyto Peeling Mask** is not rubbed into the skin, but is simply kept within 20 minutes;
- Application of **Active Phyto Complex** increases to 45 minutes.

3rd day (and further): the procedures are carried out so as during the second day with the following difference:

- Number of cleanings with **Activator lotion** increases to 15 times;
- Application of **Active Phyto Complex** lasts 1 hour, but not more.

After the second or third procedure the skin reminds of parchment. The dried layer of epidermis play the part of the natural protective factor, that's why it's not necessary to apply sun-protection preparation.

If the procedures are carried out during the 4th and 5th day, the skin becomes brown. During these sessions it's not necessary to apply **Anti-Stress Bio Complex**.



HOME CARE DURING DAYS OF PEELING PROCEDURES

The patient should inviolately follow the scheme of skin care during peeling procedures. Therefore SPA Abyss has created a special set of products used during peeling, within the two-day break between the procedures and during the post-peeling period. It includes 4 products:

- **Anti-Irritant Lotion**
- **Anti-Irritant Mask**
- **Anti-Irritant Cream**
- **Sun Protective Gel SPF 30**

Use of any other cosmetics is strictly prohibited in order to avoid complications!

Home care scheme:

- Clean the skin with the lotion **Anti-Irritant Lotion** in the morning and evening, apply the calming cream **Anti-Irritant Cream**, and use the sun-protection gel **Sun Protective Gel SPF 30** during the hours of the active sun each 3-4 hours.
- Apply the calming mask **Anti-Irritant Mask** in 2-2,5 hours after the salon procedure. (The principle of such care is current till formation of the dried layer of skin, i.e. during the first 2-3 days).
- It's necessary to warn the patient about danger of dried skin forced removal.
- It's necessary to limit water use on the skin area where peeling procedures have been carried out.
- It's strictly prohibited to visit saunas.

After finishing of the peeling procedures there is a break for two days.



During the first day the patient shall not apply any cosmetics. It's necessary for better drying of the skin.

During the second day the patient shall make a vapor bath 3-4 times a day. Therefore **Anti-Irritant Cream** is applied and the skin undergoes vapor affect within 10-15 minutes. Then the skin is dried by paper towels and **Anti-Irritant Mask** is applied. In 15-20 minutes the mask is washed off by water. It's necessary to dry the skin with paper towels. Then the skin is cleaned delicately with Anti-Irritant Lotion. The dried layer of skin shouldn't be damaged.

Anti-Irritant Cream is applied again. The procedure should be repeated in 2,5-3 hours. At the end of the day unprompted peeling of the dried skin is evidenced (in the center of the face, as a rule).

The next day it's necessary to carry out the final procedure in the beauty salon.

Final procedure:

- 1. Softening of skin:** apply **Anti-Irritant Cream** to the non-exfoliated skin and carry out vaporization procedure within 15-20 minutes. At the end of the procedure dry the skin with paper towels and clean with **Anti-Irritant Lotion**.
- 2. Massage:** make delicate massage within 10-15 minutes (mainly by circular motions by fingertips) with **Anti-Irritant Cream**. In the course of massage intensive skin exfoliation is observed. At the end of the procedure remove the remains of cream by wet sponges and clean the skin with **Anti-Irritant Lotion**.
- 3. Activation:** Apply a small amount of serum **Anti-Stress Bio Complex** and rub it delicately into the skin.
- 4. Special procedure:** Apply **Anti-Irritant Mask** and wash it off in 15-20 minutes, clean the skin with **Anti-Irritant Lotion**. Usually at this stage the skin is completely clear of the dried layer. If the skin is still unpeeled somewhere (for example, on the side face contours), no additional procedures are required. Recommend your patient to apply **Anti-Irritant Mask** in several hours, and this procedure shall finish whole exfoliation of the dried skin.
- 5. Protection and moisturizing:** Apply **Anti-Irritant Cream** at the end of the procedure and additionally **Sun Protective Gel SPF 30** during the hours of the active sun.

Tender skin after peeling therapy requires special care. At home during the first month the patient applies the same preparation as during the treatment. Additionally, the hydrating active preparation can be recommended, for example:

- **Oxygen Serum** - oxygen hydrating gel for all skin types;
- **Transdermal O2 Complex** - oxygen multi-vitamin gel for all skin types;
- **Marine Phyto Serum** - hydrating serum with marine substances;
- **Multiactive Anti-Age Complex** - multi-active anti-age complex;
- **Oil Control Phyto Gel** - hydrating antiseborrheic phyto-gel.

Skin protection against sun beams affect should be carried out at least within next 3-4 weeks.



We strongly recommend carrying out the course of immune-modeling **Oxygen Aromatherapy** in two weeks after finishing of the therapy.

If necessary, for example during treatment of deep cicatrices, the therapy of deep skin exfoliation can be repeated in 3-6 months, but obligatory during the autumn-winter period.

In one month after the therapy, the skin shall completely restored and any procedures can be carried out (skin cleansing, lifting, whitening and other professional procedures), except for keratolytic ones.

OXYGEN AROMATHERAPY

Indications for application:

The program is provided for skin of any type with atone signs (loss of elasticity and tone), "tiredness", oxygen deficiency caused by influence of unfavorable factors of the environment, stresses, chronic somatic diseases. The program is ideally suitable for women living in megacities, as well as smoking women.

It is specially recommended as skin rehabilitation after peeling procedures.

Program tasks:

- provide deep skin layers with molecular oxygen;
- normalize water balance;
- restore metabolic processes in tissues;
- activate restoration of epidermis cells;
- initiate collagen synthesis, provide skin protection against free radicals;
- improve protective skin characteristics.

Recommendations on the course of procedures:

Course: 6 procedures (2 procedures per week).

Number of courses: 2 courses per year.

As "emergency care" the program can be used as an independent single procedure.

Applied cosmetics:

- Refreshing Cleansing Mousse
- Lavender Antioxidant Scrub
- Transactive O2 Serum
- Essential Massage Balsam
- Multiactive Oxygen Mask
- DNA Eye & Throat Gel
- Bio Stimule Gel

Home Care

- Refreshing Cleansing Mousse.
- Lavender Antioxidant Scrub.
- Bio Stimule Gel.
- Oxygen Serum
- Moisturizing Mist
- Transdermal O2 System



TREATMENT PROCEDURE:

1. **Makeup removal: Refreshing Cleansing Mousse.**

Pressing the cap on the package put a necessary amount of foam into the hand. Apply it uniformly to the surface of face skin neck and décolleté area. Massage skin lightly by fingertips within 1-2 minutes. Wash it off by wet sponges.

2. **Exfoliation: Lavender Antioxidant Scrub.**

Apply the preparation (5ml) to face sin, neck and décolleté zone. Carry out manual peeling-massage or brush-peeling within 2-3 minutes. Wash off by wet sponges.

3. **Activation: Transactive O2 Serum.**

Apply uniformly 1ml (1/4 ampoule) to skin and beat in by fingertips.

4. **Massage: Essential Massage Balsam.**

Make light (cosmetic) massage within 15-20 minutes. Remove balsam residues by wet sponges.

5. **Repeated activation: Transactive O2 Serum.**

Apply uniformly 1ml (1/4 ampoule) to skin and beat in by fingertips

6. **Special procedures:**

- 6.1. Apply thin layer of **DNA Eye & Throat Gel** to face skin, neck and décolleté zone.
- 6.2. Apply **Multiactive Oxygen Mask** to face skin. In 15-20 minutes after drying of the mask; wash it off by wet sponges. Unabsorbed **DNA Eye & Throat Gel** beat in by "fingertip shower".

7. **Protection: Bio Stimule Gel.**

Apply oxygen gel to face skin.



GLYCOLIC ACID PEELING

Indications for application:

- hyperkeratinization against fading skin;
- numerous whiteheads - miliums;
- small superficial wrinkles;
- age pigment spots;
- premature skin aging.

Program tasks:

- removal of superficial damaged keratic cells;
- activation of process of cell division in all derma layers;
- increase of the level of skin hydration and collagen and elastin production;
- smoothing of small wrinkles.

Recommendations on the course of procedures:

Course: Depending on the solving cosmetic problem, the number of procedures varies from 3 to 10, each 5-10 days.

Number of courses. 2 times per year, but not during months of increased solar activity.

Counter-indications

- dry thin skin;
- sensitive skin;
- teleangectasie (cuperose);
- pregnancy and lactation.

Applied cosmetics:

- Enzymatic Cleansing Gel
- Lemon Lotion
- AHA Active Gel 10%
- Solutions of glycolic acid:
- AHA Solution 20%
- AHA Solution 35%
- AHA Solution 50%
- AHA Neutralizer Foam
- Anti-Stress Bio Complex



Home Care:

- In the breaks between procedures the patient should obligatory use sun-protection preparations. SPA Abyss series offer a wide range of sun-protection preparations for all skin types.
- It's prohibited to use oil rich creams preventing exfoliation process.
- It's recommended to apply in the evening AHA Active Gel 10%.
- Skin cleansing;
- Enzymatic Cleansing Gel;
- Lemon Lotion.

It's strictly prohibited to use exfoliates with hard granules!

TREATMENT PROCEDURE:

- 1. Cleansing:** Remove decorative cosmetics by means of cotton buds and pads, using **Make-Up Remover Gel**. Then apply **Enzymatic Cleansing Gel** to face, neck, decollete area and massage skin lightly by fingertips within 1-2 minutes. Wash off by watered sponges. At the end of procedure clean the skin with the toner **Lemon Lotion**.
- 2. Special procedure:** Apply thin layer of **AHA Active Gel 10%** and make light massage within 3-5 minutes by circular motions till complete gel absorption. At the end of the procedure clean the skin with the cotton pad moistened with the toner **Lemon Lotion**.
- 3. Peeling:** Protect paraorbital areas, eyebrows and lips with **MPC Eye Cream**. Moisten the cotton ball with one of glycolic acid solutions (20% or 35% or 50%) and clean the skin quickly beginning from the forehead, cheeks, nose and chin. If hyperemia is insufficient during the first application, repeat the procedure.
- 4. Neutralization:** Within 2-5 minutes, depending on the individual sensitivity apply **AHA Neutralizer Foam**. Therefore take the whole hand of foam, pressing the pack nozzle, and uniformly apply foam to skin in the form of mask. After its complete absorption, clean the skin with the toner **Lemon Lotion**.
- 5. Relaxation:** Apply several drops of **Anti-Stress Bio Complex** and bet it into the skin by "fingertip shower".
- 6. Special procedure:** Apply thin layer of **Vita Pure Essential Mask**. In 15-20 minutes after complete drying of the mask, remove it by wet sponges. At the end of the procedures clean the skin with the toner **Lemon Lotion**.
- 7. Protection:** If the procedure is finished during the period of solar activity, apply sun-protection gel **Sun Protective Gel SPF 30**.



DEPIGMENTING PROGRAM WITH VITAMIN C

Indications for application:

The program is recommended in case of skin pigmentation according to the pigmentation type:

- fading skin with dyschromia signs;
- excessive sunburn;
- as well as for prevention of hyper pigmentation, for dry sensitive skin with dyschro elastin synthesis;

Program tasks:

- activate process of pigmented cells peeling from the surface of epidermis layer;
- block principal reaction of melagenesis - enzymatic transformation of tyrosine into melanin;
- initiate exchange of epidermis cells;
- not break lipid and water balance of skin.

Recommendations on the course of procedures:

Course: 8-10 procedures (2 procedures per week).

Number of courses: 2-4 courses per year (within periods of the inactive sun).

As "emergency care" the program can be used as an independent single procedure.

Applied cosmetics:

- Enzymatic Cleansing Gel
- Fruit Enzyme Scrub
- Lemon Lotion
- Vit. "C" Concentrate
- Mandarin Massage Cream
- Papain Mask
- Sun Protective Gel SPF 30

Home Care:

- Enzymatic Cleansing Gel
- Pearl Buffing Cream
- Lemon Lotion
- Whitening Serum
- Vit. "C" Depigmenting Cream and Whitening Night Cream
- AHA Active Gel 10%

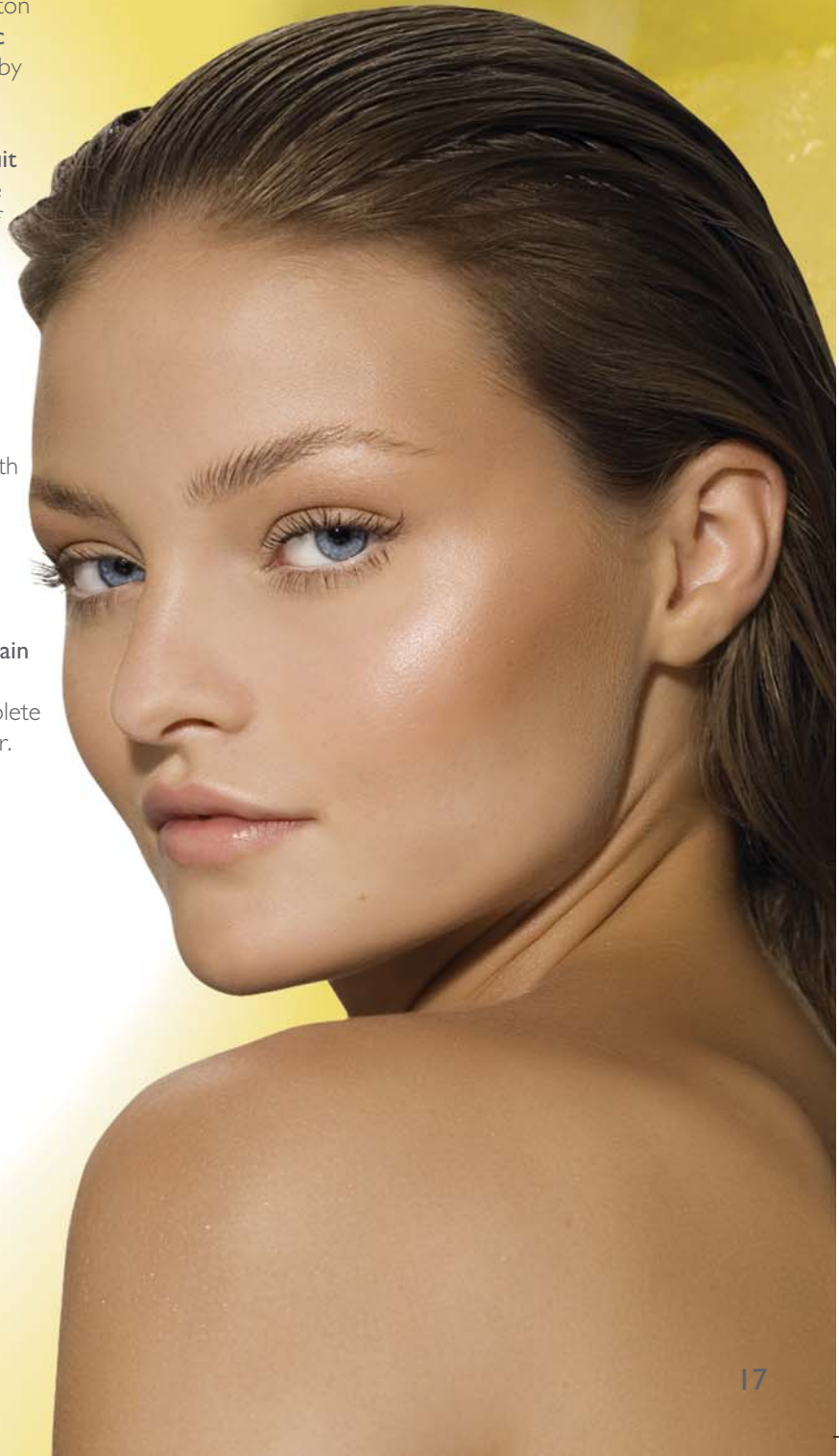
Protection: During the daytime the skin apt to increased synthesis of melanin, needs protection against sun beams.

SPA Abyss series includes a wide range of sun-protection preparations for all skin types, with and without tonal admixtures, for warm and cold seasons.



TREATMENT PROCEDURE:

- 1. Makeup removal:** Remove decorative cosmetics by means of cotton buds and pads, using **Make-Up Remover Gel**. Then apply **Enzymatic Cleansing Gel** to face, neck, decollete area and massage skin lightly by fingertips within 1-2 minutes. Wash off by watered sponges.
- 2. Deep cleansing (exfoliation):** Apply scrub for deep cleansing **Fruit Enzyme Scrub** uniformly to face skin, neck and decollete area. Make manual peeling-massage within 2-3 minutes. Remove the remains of cream by watered sponges.
- 3. Toning:** Apply toning **Lemon Lotion** to cotton pads and treat face skin, neck and decollete area thoroughly.
- 4. Massage:** Make cosmetic massage with the pigmenting cream **Mandarin Massage Cream** within 15-20. At the end of procedure remove the remains of cream by wet sponges and clean the skin with toner **Lemon Lotion**.
- 5. Activation:** Apply 1ml (1/4 of ampoule) of **Vit. "C" Concentrate** to face skin and beat in by fingertips.
- 6. Special procedure:** Dilute 1 teaspoon (5g) of powder mask **Papain Mask** with **Lemon Lotion** to liquid sour cream consistency. Apply uniformly to skin. Protect eyelids with **MPC Eye Cream**. After complete drying of the mask, remove it by water and clean the skin with toner.
- 7. Repeated activation:** Apply 1ml (1/4 of ampoule) of **Vit. "C" Concentrate** to face skin and beat in by fingertips.
- 8. Protection:** Only during solar activity hours! Apply sun-protection preparation **Sun Protective Gel SPF 30**.



PROGRAM

“ANTICUPEROSE, ANTISTRESS AND ANTIOXIDANT”

Indications for application:

The program is provided for sensitive skin with signs of stress and premature aging, cuperose, broken functions of self-regulation.

Program tasks:

- increase skin protective characteristics;
- provide long-term protection against free radicals;
- provide general relaxing effect on the whole body and, particularly, facial muscles;
- activate local microcirculation;
- strengthen vascular walls and thereby decrease appearance of cuperose;
- prevent its development.

Recommendations on the course of procedures:

Course: 8-10 procedures (2 procedures per week).

Number of courses: 2 courses per year.

Supporting procedures: 1 time per month.

As “emergency care” the program can be used as an independent single procedure.

Applied cosmetics:

- Aloe Vera Cleansing Gel
- Jojoba Exfoly Gel
- Embryo Plant Skin Elixir
- Azulene Soothing Emulsion
- Invigorating Massage Oil
- Azu Gel Soothing Mask and Fresh Plant Cells Nutrient Mask
- Bio Stimule Gel

Home Care

- Aloe Vera Cleansing Gel
- Jojoba Exfoly Gel
- Embryo Plant Skin Elixir.
- Azulene Soothing Emulsion
- Bio Stimule Ge.
- Sun Protective Gel SPF 20
- Total Sunblock Anti-Aging Cream SPF 50
- Azu-Gel Soothing Mask;
- Fresh Plant Cells Nutrient Mask.



TREATMENT PROCEDURE:

- 1. Makeup removal:** Remove decorative cosmetics by means of cotton buds and pads, using **Make-Up Remover**. Then apply **Aloe Vera Cleansing Gel** (5ml) to face, neck, decollete area slightly massaging by fingertips within 1-2 minutes. Wash off by watered sponges.
- 2. Exfoliation:** Apply **Jojoba Exfoly Gel** by wet fingers and make delicately manual peeling massage within 2-3 minutes. Wash off by water.
- 3. Toning:** Apply **Embryo Plant Skin Elixir** to cotton pads and treat face skin, neck and decollete area thoroughly.
- 4. Activation:** Apply a small amount of **Azulene Soothing Emulsion** uniformly to skin including area of eyelids, and beat it in by "fingertip shower".
- 5. Massage:** Using **Invigorating Massage Oil** make delicate massage-drainage within 15 minutes. At the end of procedure remove oil remains by wet sponges and clean the skin with lotion **Embryo Plant Skin Elixir**.
- 6. Repeated activation:** Apply a small amount of **Azulene Soothing Emulsion** uniformly to skin including area of eyelids, and beat it in by "fingertip shower".
- 7. Special procedure:** Depending on the skin state select one of two masks:
 - Fresh Plant or Cells Nutrient Mask** or
 - Azu-Gel Soothing Mask**.Apply dense layer of mask including eyelid skin, in 10-15 minutes wash the mask off by water and clean the skin with lotion **Embryo Plant Skin Elixir**.
- 8. Protection:** Apply depending on the season:
 - Bio Stimule Gel** - during warm period.
 - Azulene Soothing Emulsion** - during cold period.P.S. If the procedure is carried out during daytime, then apply phytoprotective cream-gel **Sun Protective Gel SPF 30**.



HYDRO-TONIC EXPRESS-PROGRAM “MEDITERRANEAN BREEZE”

Indications for application:

The program is provided for quick revitalization of older, inelastic skin, with evident signs of dehydration, reduced skin tone and elasticity.

Program tasks:

- restore natural moistening factor (NMF);
- enrich skin with microelements, increase its ability to hold moisture;
- increase microcirculation, strength blood vessel walls;
- improve skin protective functions.

Recommendations on the course of procedures:

Course: 6 procedures (2 procedures per week).

Number of courses: 2 courses per year.

Supporting procedures: 1 procedure per month.

As “emergency care” the program can be used as an independent single procedure.

Applied cosmetics:

- DNA Marine Cleansing Milk
- Gommage
- Vita Mineral Toner
- Marine Phyto Serum
- Marine Collagen Cooling Gel
- Hydro Balancing Algae Mask
- Hydro Balancing Cream

Home Care:

- Cleansing and tonic cosmetics should be recommended depending on the type and state of skin.
- Hydro Balancing Algae Mask
- Hydro Balancing Cream
- Marine Phyto Serum



TREATMENT PROCEDURE:

- 1. Makeup removal:** Remove decorative cosmetics by means of cotton buds and pads, using **Make-Up Remover Gel**. Then apply **DNA Marine Cleansing Milk** to face, neck, and décolleté area and massage skin lightly by fingertips within 1-2 minutes. Remove milk with wet sponges.
- 2. Deep cleansing (exfoliation):** Apply thin layer of **Gommage** to face skin, neck, décolleté area. When the preparation sinks in the skin (approximately half a minute), roll it by light circular massage motions and wash it off by water.
- 3. Toning:** Apply toning lotion **Vita-Mineral Toner** to cotton pads and treat face skin, neck and décolleté area thoroughly.
- 4. Activation:** Apply a small amount of **Marine Phyto Serum** to face skin, including eyelids, neck and décolleté area and beat in by means of "fingertip shower".
- 5. Massage:** Using **Marine Collagen Cooling Gel** make lymphatic drainage massage within 15-20 minutes. At the end of the procedure sponge unabsorbed gel with paper towels.
- 6. Special procedure:** Apply thin layer of **Hydro Balancing Algae Mask** to face skin, neck and décolleté area, including eyelids for 15-20 minutes. Then wash the mask off by water.
- 7. Protection and moistening:** Apply **Hydro Balancing Cream** to face skin, neck and beat it in by fingertips up to complete absorption.



PEPTIDE NON-OPERATING LIFTING

Indications for application:

The program is provided for mature skin with evident signs of aging: deep and small wrinkles, deformation of face contours, double chin, as well as for emergency restoration of the face contours, removal of visual effect of “tired” face after stress, removal of swellings.

Program tasks:

- provide bio-stimulating and lifting effects;
- fix the face contours, remove double chin;
- smooth wrinkles;
- tone deeply facial muscles;
- initiate lymph drainage;
- remove swellings;
- activate blood circulation;
- initiate collagen and elastin synthesis;
- provide deep nutrition and moistening.



Recommendations on the course of procedures:

Course: 10-12 procedures (2 procedures per week).

Number of courses: 2 courses per year.

Supporting procedures: 2 times per month.

As “emergency care” the program can be used as an independent single procedure.

Counter-indications: couperose.

Applied cosmetics:

- DNA Marine Cleansing Milk
- Gommage
- Vita Mineral Toner
- DNA & MPC Activator
- Firming Gel
- Firming Massage Cream
- Fibronectic Eye Gel Mask
- Protein Powder Mask
- Firming Solution
- Peptide Lifting Cream

Home Care:

- Peptide lifting Cream
- Lifting Day Cream SPF 15
- Lifting Night Cream
- Lifting Active Serum



TREATMENT PROCEDURE:

- 1. Makeup removal:** Remove decorative cosmetics by means of cotton buds and pads, using **Make-Up Remover Gel**. Then apply **DNA Marine Cleansing Milk** to face, neck, and décolleté area and massage skin lightly by fingertips within 1-2 minutes. Remove milk with wet sponges.
- 2. Deep cleansing (exfoliation):** Apply uniform thin layer of **Gommage** to face skin, neck and décolleté area. When the preparation sinks in the skin (approximately half a minute), roll it by light circular massage motions and wash it off by water.
- 3. Toning:** Moisten cotton pads with toning lotion **Vita Mineral Toner** and treat face skin, neck and décolleté area thoroughly.
- 4. Activation:** Apply uniformly 1ml (1/4 ampoule) of **DNA & MPS Activator** to face skin, neck and decollete area and beat it in by "fingertip shower".
- 5. Massage:** Apply **Firming Gel** (5ml) over the applied concentrate, lightly rubbing it into skin, then apply **Firming Massage Cream** (5ml) and make plastic massage within 20-30 minutes. If the course of massage the cream stops providing sliding effect, i.e. "fell", moisten the skin with several drops of **Lifting Solution**. At the end of massage don't remove remains of cream!
- 6. Repeated activation:** Apply uniformly 1ml (1/4 ampoule) of **DNA & MPS Activator** to face skin, neck and decollete area and beat it in by "fingertip shower".



7. Special procedure:

- 7.1. Fibronectic Eye Gel Mask** - First apply special applicators of non-woven material to paraorbital areas and over them - a thin uniform layer of lifting mask for eyelids. Applicators are removed before washing of **Protein Powder Mask** (see 7.2.).
- 7.2. Protein Powder Mask** - apply mask to the face, neck and décolleté area (10ml of mask should be diluted by **Firming Solution** to liquid sour cream consistency before procedure beginning!) When the mask becomes dry, first it's necessary to soak it with **DNA Marine Cleansing Milk**, remove applicators from eyes and then wash the mask off by watered sponges.

8. Toning: Moisten cotton pads with toning lotion **Vita Mineral Toner** and treat face skin, neck and décolleté area thoroughly.

9. Protection: Apply **Peptide Lifting Cream** to face skin, neck and décolleté area.



REVIVING THERAPY FOR SKIN AROUND EYES

Indications for application:

The program is provided for removal of swellings, dark circles under eyes, small wrinkles, for protection against premature aging of eyelid skin.

Program tasks:

- provide moistening and nutrition of skin;
- normalize water and lipid balance;
- activate collagen synthesis and division of cells of epidermis stratum basale;
- activate microcirculation, improve lymph and venous drainage.

Recommendations on the course of procedures:

Course: 6 procedures (2 procedures per week).

Number of courses: 2 courses per year.

Supporting procedures: 1 time per month.

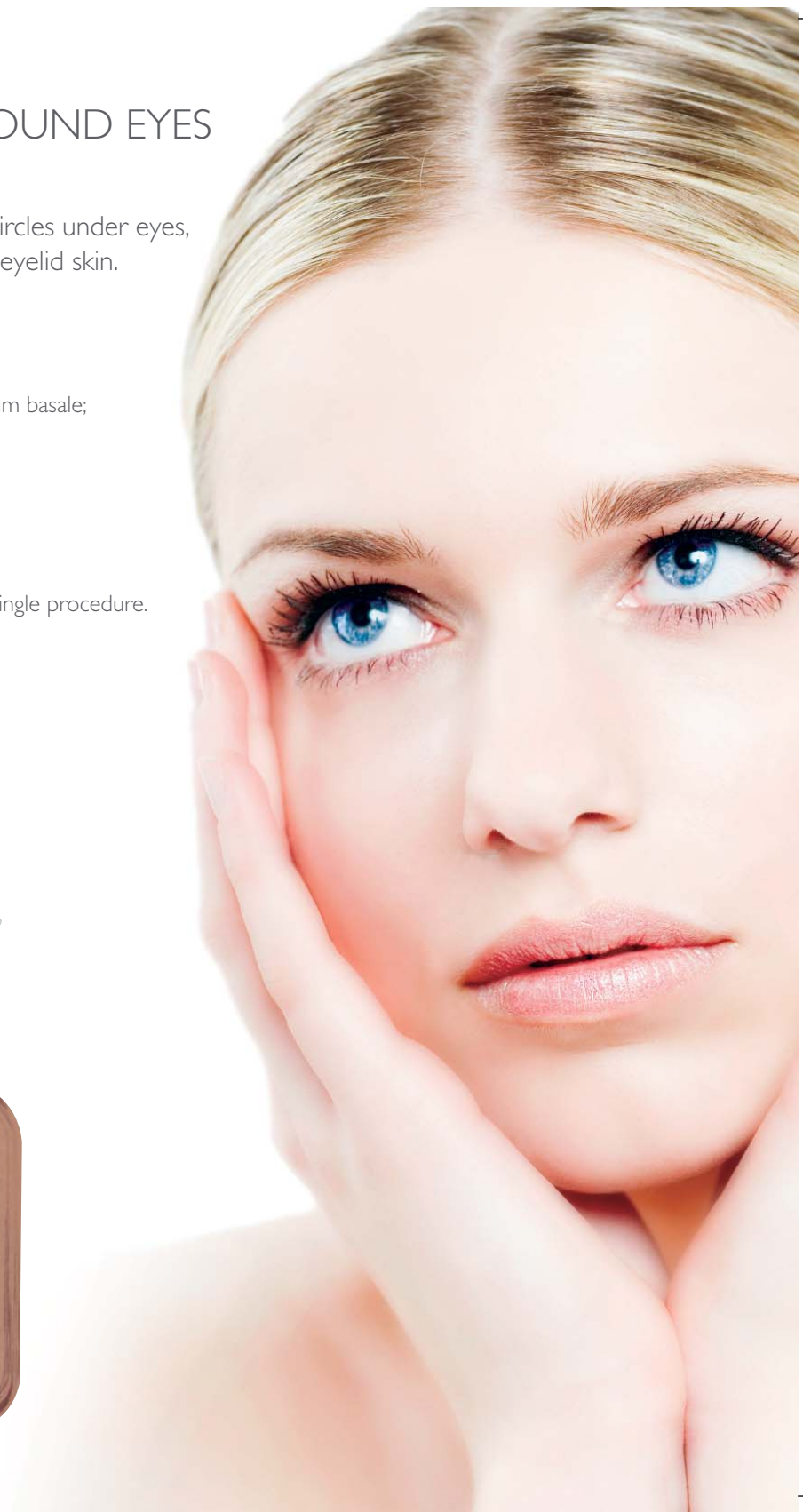
As "emergency care" the program can be used as an independent single procedure.

Applied cosmetics:

- Make-Up Remover Gel
- Embryo Plant Skin Elixir
- Revita Lift Eye Mask
- Fibronectic Eye Gel Mask
- Collagen Eye Mask
- Plant Cells Eye Concentrate
- MPC Eye Cream
- DNA Eye & Throat Gel

Home Care:

- Make-Up Remover Gel
- MPC Eye Cream
- DNA Eye & Throat Gel
- Golden Glow Eye Lift Repair Cream
- Eye Lifting Cream SPF8.



TREATMENT PROCEDURE:

- 1. Makeup removal:** Apply **Make-Up Remover Gel** to face skin, neck, decollete area, massage skin lightly by fingertips within 1-2 minutes. Remove decorative cosmetics by means of cotton buds and pads from eyes and lips. Remove remains of gel by wet sponges.
- 2. Toning:** Apply **Embryo Plant Skin Elixir toner** to cotton pads and treat face skin, neck and decollete area thoroughly.
- 3. Massage of eyelid area:** Make lymph drainage and (or) point massage of paraorbital area by cream **MPC Eye Cream** within 10 minutes. Absorb the remains of cream by paper towel.
- 4. Activation:** Apply 2-3 drops of **Plant Cells Eye Concentrate** to the area of each eyelid. Lightly beat it in by fingertips.
- 5. Special procedure:** Select the mask for eyelids for your patient according to the skin individual requirements:
Revita Lift Eye Mask - nutrient lifting mask;
or
Fibronectic Eye Gel Mask - hydrating lifting mask;
or
Collagen Eye Mask - hypoallergenic softening and hydrating mask.
Apply the mask to the paraorbital area. In 10-15 minutes remove the mask (except for **Revita Lift Eye Mask**, remains whereof are bet into eyelid skin by fingertips) and sponge skin with paper towel.
- 6. Protection:** Apply thin layer of **DNA Eye & Throat Gel** to eyelid skin, neck and decollete. Apply cream to face skin corresponding to the skin type. Absorb remains by paper towel.

Note: The program can be combined with any procedure provided for face care.



INTENSIVE THERAPY “REVITALIZATION, NUTRITION AND MOISTENING”

Indications for application:

The program is provided for dry thin mature skin with evident signs of fading, with decreased activity of adipose glands, with reduced tissue tension and wrinkles.

Program tasks:

- activate collagen III and elastin synthesis;
- provide long-term nutrition and moistening;
- restore lipid and water balance of epidermis;
- protect skin against effect of free radicals;
- activate vital functions of cells.

Recommendations on the course of procedures:

Course: 8-12 procedures (2 procedures per week).

Number of courses: 2 courses per year.

Supporting procedures: 1 time per month.

As “emergency care” the program can be used as an independent single procedure.



Applied cosmetics:

- Banana Cleansing Milk
- Gommage
- Banana Refreshing Toner
- Rejuvenate Active Serum
- Silkening Massage Cream
- Intense Revitalizing Mask
- Oligoprotein Lifting Mask
- Revita Lift Eye Mask
- Citrus Revitalizing Cream

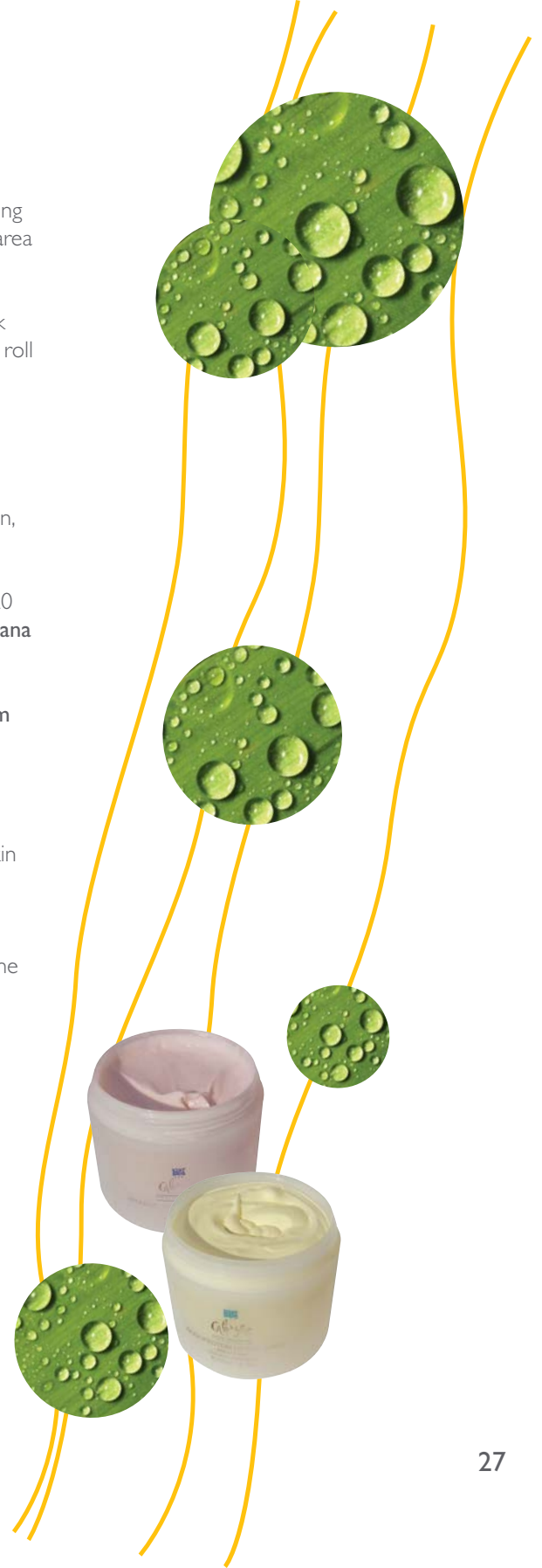
Home Care:

- Banana Cleansing Milk
- Gommage
- Banana Toner
- Citrus Revitalizing Cream
- Regenerating Night Cream
- Rejuvenate Active Serum
- Multiactive Anti-Age Complex
- MPC Eye Cream
- Oligoprotein Lifting Mask
- Revita-Lift Eye Mask



TREATMENT PROCEDURE:

- 1. Makeup removal:** Remove decorative cosmetics by means of cotton buds and pads, using **Make-Up Remover Gel**. Then apply **Banana Cleansing Milk** to face, neck, and décolleté area and massage skin lightly by fingertips within 1-2 minutes. Wash off by watered sponges.
- 2. Deep cleansing (exfoliation):** Apply uniform thin layer of **Gommage** to face skin, neck and décolleté area. When the preparation sinks in the skin (approximately half a minute), roll it by light circular massage motions and wash it off by water.
- 3. Toning:** Moisten cotton pads with toning lotion **Banana Toner** and treat face skin, neck and décolleté area thoroughly.
- 4. Activation:** Apply uniformly 1 ml (1/4 ampoule) of **Rejuvenate Active Serum** to face skin, neck and décolleté area and beat it in by "fingertip shower".
- 5. Massage:** Make massage (classical or plastic) with **Silkening Massage Cream** within 15-20 minutes. Absorb the remains of cream with paper towels and clean the skin with the **Banana toner**.
- 6. Repeated activation:** Apply uniformly 1 ml (1/4 ampoule) of **Rejuvenate Active Serum** to face skin, neck and décolleté area and beat it in by "fingertip shower".
- 7. Special procedure:**
 - 7.1. Apply mask for eyelids to the paraorbital area **Revita-lift Eye Mask**.
 - 7.2. Apply dense layer of mask selected depending on the skin state including eyelid skin for 15-20 minutes:
 - Intense Revitalizing Mask** or
 - Oligoprotein Lifting Mask**Then wash the mask off by water and beat remains of **Revita Lift Eye Mask** into the skin by fingertips.
- 8. Protection:** Apply **Citrus Revitalizing Cream** to face skin, neck and décolleté area.



BIOACTIVE ANTI-AGE IONOTHERAPY “GOLDEN GLOW”

Indications for application:

The program is provided for mature skin, can be used as protective treatment of premature aging.

Program tasks:

- activate power-consuming processes and collagen synthesis;
- initiate epidermis cell renewal;
- restore skin protective functions;
- restore skin elasticity and plasticity.

Recommendations on the course of procedures:

Course: 10-12 procedures (2 procedures per week).

Number of courses: 2 courses per year.

As “emergency care” the program can be used as an independent single procedure.

Applied cosmetics:

- Golden Glow Cleansing Mousse
- Golden Glow Gommage
- Golden Glow Alginate Exfoliating Mask
- Golden Glow Retexturizing Booster
- Golden Glow Massage Cream
- Golden Glow Eye Mask
- Golden Glow Peel-off Mask
- Golden Glow Radiance Cream

Home care:

- Golden Glow Cleansing Mousse
- Golden Glow Retexturizing Booster
- Golden Glow Anti-Wrinkle Cream
- Golden Glow Eye Lift Repair Cream



TREATMENT PROCEDURE:

- 1. Makeup removal:** Remove decorative cosmetics by means of cotton buds and pads, using **Make-Up Remover Gel**. Then apply **Golden Glow Cleansing Mousse** to face, neck, and décolleté area and massage skin lightly by fingertips within 1-2 minutes. Remove milk with wet sponges.
- 2. Exfoliation:** Apply thin layer of **Golden Glow Gommage** to face skin, neck, décolleté area. In 1-2 minutes carry out manual peeling-massage, in the course thereof the preparation should be rolled of the skin. Wash residual preparation off by wet sponges.
- 3. Bio-exfoliation:** Dilute the contents of one pack (30gr) **Golden Glow Alginate Exfoliating Mask** with cool water (90ml), quickly mixing to indiscrete elastic mass. Then apply the mask to face skin, neck and décolleté area. In 15-20 minutes remove dried mask wholly, pulling it from the bottom upwards. Remove the remains of mask by wet sponges.
- 4. Activation:** Apply 4-5 drops of **Golden Glow Retexturizing Booster** to face skin, neck and décolleté area. Beat in by "fingertip shower".
- 5. Massage:** Make massage (classical or plastic) by **Golden Glow Massage Cream** within 20-35 minutes. Absorb the remains of cream with paper towels.
- 6. Repeated activation:** Apply 4-5 drops of **Golden Glow Retexturizing Booster** to face skin, neck and décolleté area. Beat in by "fingertip shower".
- 7. Special procedure:**
 - 7.1 Apply thin layer of **Golden Glow Eye Mask** to paraorbital areas, neck and décolleté area.
 - 7.2 Put an applicator of non-woven material on the face tightly pressing it to skin. The apply uniform thin layer of **Golden Glow Peel-off Mask** over the applicator, excluding eyelid skin, neck and décolleté zone. In 20-25 minutes after the mask becomes dry, pull the applicator from the bottom upwards, removing the mask completely.
- 8. Protection:** Apply a small amount of **Golden Glow Radiance Cream** to face skin lightly rubbing it into the skin. At the end beat the remains of gel into eyelid skin, neck and décolleté by "fingertip shower".



SPA PROCEDURE FOR FACE SKIN “CHOCOLATE DELIGHT”

Indications for application:

The program is provided of deep nutrition of skin with “tiredness” signs, i.e. skin lost healthy complexion, elasticity and plasticity caused by different stress factors, including meteorological factors (cold, wind, sun).

Program tasks:

- restore natural protective factors, including lipid one;
- provide long-term protection against free radicals, provide general relaxing effect on the whole body and, particularly, facial muscles;
- strengthen vascular walls;
- enrich the skin with microelements;
- provide quick regeneration of skin and its ability to hold moisture.

Recommendations on the course of procedures:

Course: 5-8 procedures (2 or 3 procedures per week).

As “emergency help” the program can be used as an independent single procedure in case of it's necessary to normalize the face state.

Applied cosmetics:

- Milk Shake
- Cappuccino Buff
- Gourmet Toner
- Massage Soufflé
- Mocha Mask
- Alginate Chocolate Mask
- Elite Cream



TREATMENT PROCEDURE:

- 1. Cleansing:** Apply a small amount of **Make-Up Remover Gel** to face skin, neck and décolleté area, lightly massaging the skin within 1-2 minutes. Apply **Milk Shake** to face skin, neck and décolleté area, lightly massaging the skin within 1-2 minutes. Wash off by wet sponges.
- 2. Toning:** Moisten cotton pads with **Gourmet Toner** and treat face skin, neck and décolleté area thoroughly.
- 3. Deep cleansing (exfoliation):** Apply uniform thin layer of **Cappuccino Buff scrub** to face skin, neck and decollete area and carry out special massage-exfoliation within 2-3 minutes, wash the preparation off by wet sponges.
- 4. Toning:** Moisten cotton pads with **Gourmet Toner** and treat face skin, neck and décolleté area thoroughly.
- 5. Massage:** Depending on the skin state make either cosmetic or plastic massage with **Massage Souffle cream** within 15-25 minutes. At the end of procedure remove remains of cream by wet sponges.
- 6. Toning:** Moisten cotton pads with **Gourmet Toner** and treat face skin, neck and décolleté area thoroughly.
- 7. Special procedure:** Select one of two masks for your patient:
 - 7.1. Mocha Mask** is applied by dense uniform layer to face, neck and décolleté zone. Wash the mask off with water in 15-20 minutes.
 - 7.2. Alginate Chocolate Mask** - Dilute the contents of one pack with cool water (30g), quickly mixing to indiscrete elastic mass and apply the mask to face skin, neck and décolleté area by uniform layer immediately. In 15-20 minutes remove the dried mask completely, pulling it from the bottom upwards. Remove the remains of mask by wet sponges.
Elite Cream can be applied by thin layer to the area around eyes in the form of mask.
- 8. Toning:** Moisten cotton pads with **Gourmet Toner** and treat face skin, neck and décolleté area thoroughly.
- 9. Protection:** Apply nourishing cream **Elite Cream** to skin at the end of the procedure.



SPA PROCEDURE "CHOCOLATE BODY LIFTING"

Indications for application:

- 1-3 stage of cellulite;
- edema of lower limbs, "heavy feet" symptom;
- lymphostasis and venous drainage abnormality;
- skin tone decrease with drastic weight loss, after delivery;
- increased fragility of thigh vessels, cellulite prevention.

Contraindications:

- acute inflammatory diseases of skin and chronic acute diseases in acute stage;
- pregnancy;
- mechanical injuries of skin in the procedure area.

Program tasks:

- increase of elasticity and skin tone in problem areas;
- strengthening of vascular walls;
- normalization of lympho - and venous drainage;
- leveling of skin relief owing to decrease of problem areas' dimensions;
- activation of local microcirculation;
- increase of the central nervous system's tone and stress release.



Recommendations on the course of procedures:

Course: 10-15 procedures

Periodicity: in 1-2 days

Number of courses: 2-3 times per year

Attention: does not require shower.

Applied cosmetics:

- Chocolate Cleansing Lotion
- Chocolate Gommage
- Chocolate Massage Lifting Cream
- Chocolate Lifting Gel
- Chocolate Lifting Mask
- Chocolate Lifting Cream

Home Care:

- Chocolate Lifting Gel and
- Chocolate Lifting Cream.



TREATMENT PROCEDURE:

Stages 1-3 are done in client's standing position.

1. Measurement of body capacities:

Make measurements of body capacities in the following areas:

- waist circumference;
- buttocks circumference;
- upper thigh circumference (gluteal fold area);
- middle thigh circumference;
- knee circumference (patella area).

Write down the values into the checklist. The area of measurements should be marked off clearly. It is necessary so that with every procedure the measurements were made in the same area.

1. Cleansing: Clean the skin with a cotton pad soaked in **Chocolate Cleansing Lotion**.

2. Deep cleansing (exfoliation): Apply a thin level layer of **Chocolate Gommage** and in 1-3 minutes with circular massage motions "roll down" the preparation from skin surface. Remove the preparation remains with a warm and wet towel.

3. Activation: Apply a thin layer of **Chocolate Lifting Gel**. Then wrap a client with polyethylene film from ankle joint to waist, trying to achieve the same pressure (compression) in all the areas. Leave for 20-35 minutes. Hot chocolate may be offered to a client during the procedure. After the expiry of time remove the film, remove the gel remains with a warm and wet towel.

4. Massage: Make lymphatic drainage massage using modeling **Chocolate Lifting Cream**. Massage duration should be not less than 15 minutes. Remove the cream remains with a warm and wet towel.

5. Special procedure: Apply a thin layer of **Chocolate Lifting Mask**. Wrap the client first with a cellophane sheet and then with a warm blanket. Leave for 15-20 minutes. Secure complete relaxation for the client (it's good to switch on a soft relaxing music). After the expiry of time remove the mask with a warm and wet towel. In the end dry the skin.

6. Protection: Apply **Chocolate Lifting Cream** and rub it into the skin.

7. The control of body volume measurement:

Conduct a test measuring the volume of the body (of the customer standing) Record results in the control card.



THERMOACTIVE ANTICELLULITE PROGRAM

Cellulite is structural change in subcutaneous layer resulting in abnormality of microcirculation and lymphatic outflow. Presence of cellulite does not depend on a woman's age or body weight.

The set of preparations from the anti-cellulite program enables a cosmetologist quickly and efficiently solving the problems of cellulite and local fat deposits at all stages, considering custom-tailored approach to the problems of every client. The preparations are easy-to-use, are easily absorbed into skin, and may be used either independently or in combination with special equipment. Does not require shower cubicle!

Indications for application:

- Fibrous cellulite of stage 1 and 2;
- Local fat deposit;
- Decrease of skin tone and elasticity.

Program tasks:

- Decrease of thickness and density of subcutaneous fat owing to lipolysis process activation;
- Leveling of skin relief;
- Decrease of problem areas dimensions;
- Removal of local edemas;
- Normalization of lympho- and venous drainage;
- Activation of local microcirculation;
- Increase of skin tone and elasticity in problem areas.

Recommendations on the course of procedures:

Course: 10-15 procedures, periodicity - every second day. At fine-cellular or edema tic cellulite, 2 procedures per week are enough.

Number of courses: 2-3 times per year.

Consulting: In some cases with associated diseases it is necessary to ask for advice of gynecologist, endocrinologist or physician.

Contraindications:

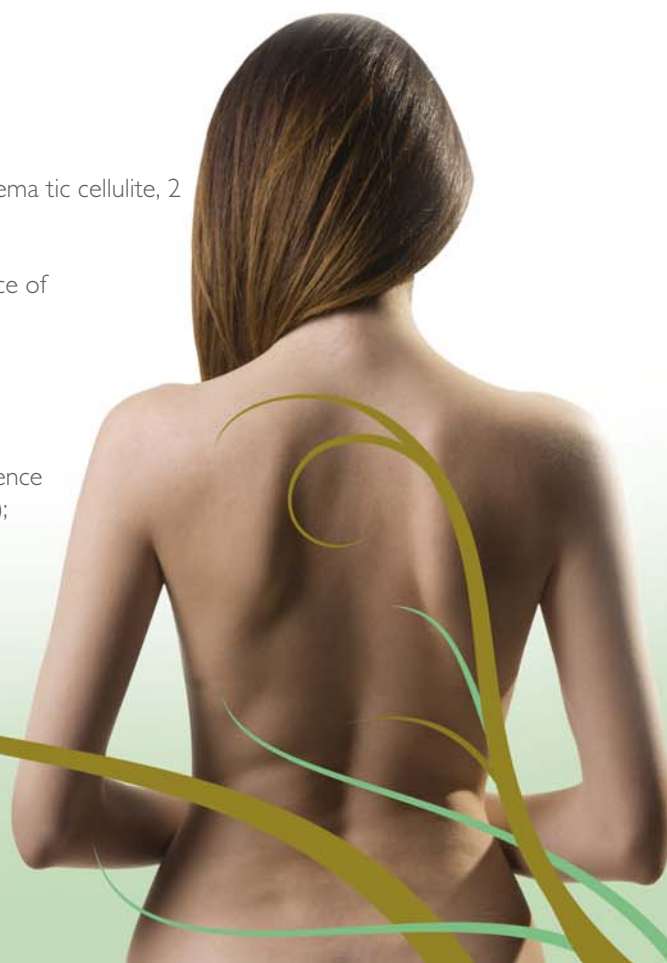
- Varicosity, thrombophlebitis;
- Acute inflammatory skin diseases and chronic diseases in the procedure area;
- Inflammatory diseases of female reproductive system in acute stage and presence of benign neoplasm in anamnesis (myomas, fibromas, polycystic ovaries etc.);
- Pregnancy;
- Mechanical injuries of skin in the procedure area;
- It is not recommended to make the procedure within the day of epilation.

Applied cosmetics:

- Lympho-Stimulating Enzyme Gel
- Lipolysis active concentrate
- Algae Thermo Mask
- ARO Massage Body Oil
- Spiruline Module Cream

Recommended products for household use:

- Honey Slimming Gel
- Avocado Body Balsam
- Apricot Body Scrub



TREATMENT PROCEDURE:

Stages 1-4 are done in client's standing position.

1. Measurement of body capacities:

Make measurements of body capacities in the following areas:

- waist circumference;
- buttocks circumference;
- upper thigh circumference (gluteal fold area);
- middle thigh circumference;
- knee circumference (patella area).

Write down the values into the checklist. The area of measurements should be marked off clearly. It is necessary so that with every procedure the measurements were made in the same area.

2. Biostimulation: Limpho-Stimulating Enzyme Gel

Apply a thin layer of gel and with circular motions embrocate it into skin till complete absorption.

3. Activation: Lipolysis Active Concentrate

Apply anti-cellulite concentrate to problem areas of skin.

4. Special procedure: Algae Thermo-Mask

Apply a thin layer of thermoactive anti-cellulite mask, then wrap a client with polyethylene film from ankle joint to waist, trying to achieve the same pressure (compression) in all the areas. Leave for 30-45 minutes. To increase effect it is possible to use a thermal blanket. Hot green or herbal tea may be offered to a client during the procedure. After the expiry of time remove the film, rub the gel remains into the skin.

5 Massage: ARO Massage Body Oil

Make lymphatic drainage massage using the massage oil. Remove the cream remains with tissues or a towel. Massage duration should be not less than 15 minutes.

6. Conclusive procedure: Spiruline Module Cream

Apply modeling cream.

7. Monitoring measurement of body capacities:

Make monitoring measurement of thigh circumference (in client's standing position). Write down the results into the checklist.



EXPRESS PROGRAM

“HANDS AND FEET SKIN TREATMENT”

Indications for application:

The program is designed for elimination of limb hyperkeratosis (weather-beaten exfoliating hands, plantar callosities, calluses etc.) with further manicure or pedicure.

Program tasks:

- Softening of keratic skin thickenings;
- Removing of plantar callosities and calluses;
- Relieving tension of hands and legs muscles;
- Improving local, lymphatic and venous blood circulation;
- Softening, hydrating and providing deep skin nourishment.

Course recommendations:

Course: in 2-3 days till achieving effect but preferably not more than 10.

Number of courses: according to indications.

May be used as an independent solitary procedure or before manicure or pedicure.

Applied cosmetics and treatment procedure

Exfoliation: Fruit Acids Exfoliant

Apply a small amount of scrub-cream to a wet skin and massage during several minutes, paying special attention at areas with coarse skin, plantar callosities and calluses. Wash away with warm water.

Special procedure: Keratolysis Cream

Apply a small amount of cream equally at the surface of areas requiring treatment.

Put plastic socks (gloves) on feet (hands), leave for 15-30 minutes depending on hyperkeratosis stage.

Then put legs (hands) into warm water and make paraffin application (10-15 minutes).

After that start tool treatment - manicure or (and) pedicure.

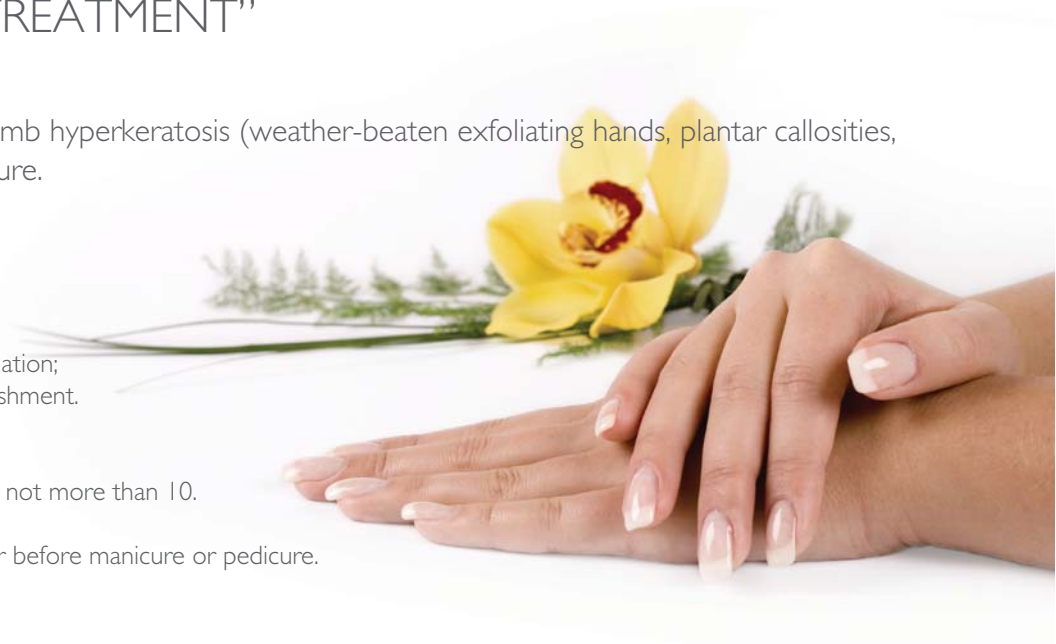
Massage: Veno -Tone Massage Cream

Spread a small amount of preparation on the skin surface and make massage.

In the end remove the cream remains with a towel.

Relaxation and protection: Relaxing Gel

Apply a small amount of gel to the skin and slightly rub it into skin till complete absorption.



Make-up removers

DNA Marine Cleansing Milk - for all skin types 500ml / 200ml

Cleansing milk for all skin types, especially for dry and sensitive one. Easily removes impurities from the skin surface, adds sheen without greasy look.

Ingredients: Jojoba wax, Sunflower oil, Hamamelis, Allantoin, Sea Nucleoproteins (DNA), Amphoteric surface active agents.

Milk Shake - for all skin types 200ml

Lightweight nourishing and cleansing milk for all skin types. Cleaning impurities from the skin surface, smoothing and soothing to the skin. Neutralizes free radicals.

Ingredients: Coconut and Sunflower oil, Mimosa and Cocoa extracts, Allantoin, vitamin E, Amphoteric surface active agents.

Make-Up Remover Gel - for all skin types 500ml / 200ml

Make-up remover gel. Perfectly removes make-up from eyes and lips, not irritating mucous membrane. Removes water resistant mascara of any texture. Cares for eyelid skin, smoothing and hydrating it. Tested under ophthalmologic control.

Ingredients: Azulene, Aloe-gel, Cucumber and Hamamelis extracts.

Refreshing Cleansing Mousse - for all skin types 200ml

Hypoallergenic oxygen cleansing and toning foam. Delicately and efficiently removes surface impurities, including make-up.

Ingredients: Peptidoglycans (immunomodulator), Aloe-gel, Azulene, Hamamelis, Cucumber extract, vitamin B complex.

Golden Glow Cleansing Mousse - for all skin types 200ml / 100ml

Cleansing gel. Delicately and efficiently removes surface impurities, hydrating and smoothing the skin, not robbing the skin of its protective barrier.

Ingredients: bio-chelate Gold, Aloe-gel, Lecithin, Sorbitol, Glycerol, Dimeticone.

Aloe Vera Cleansing Gel - for sensitive and dehydrated skin 500ml / 200ml

A gentle cleansing gel that refreshes and calms the skin.

Ingredients: D -Panthenol, Aloe Vera, Witch Hazel, Micro - Capsules with Vit. A and E.

Enzymatic Cleansing Gel - for oily and pigmented skin 500ml / 200ml

Purifies and clarifies the skin. Dissolves impurities and dead cellular debris. Cleanses deeply the epidermis and inhibits sebaceous activity. Superb as fast acting facial wash. Soap free.

Ingredients: Papaya extr. Mango extr. Passion extr., D -Panthenol, Vit. C.

Banana Cleansing Milk - for dry and dehydrated skin 500ml / 200ml

Cleansing milk for dry and dehydrated skin with broken epidermal barrier. Delicately cleanses and smoothes the skin, relieving irritation and contributing to regeneration.

Ingredients: Sunflower oil hydrolyzed, Panthenol, Allantoin, Jojoba wax, Wheat proteins, Mimosa and banana extracts.

Skin deep cleansing cosmetics

Lavender Antioxydant Scrub - for all skin types 250ml / 100ml

Antioxidant scrub with lavender oil. Provides soft desquamation of dead skin cells of corneal layer, activates local microcirculation, oxygenates the skin, and strengthens skin immunity.

Ingredients: Calendula oil, Jojoba granules, Lavender and Tea Tree ether oils, Green tea extract.

Cappuccino Buff - for all skin types 150ml

Lightweight pearl cream-scrub for deep cleansing of skin and pores. Removes dead epidermis cells, cleanses pores, calms irritated skin.

Contains powerful antioxidant complex.

Ingredients: Mimosa, Cypress, Amica, Horse-Chestnut and Solomon's seal extracts, Cocoa, Milk proteins, Olive pellets.

Gommage - for all skin types 100ml / 30ml

New generation exfoliant cream with seaweed extracts. Literally in 30 seconds after application to the skin, removes "dead" keratin cells from the skin surface.

Ingredients: Seaweed, Cucumber and Wild Rose extracts.

Golden Glow Gommage - for all skin types 100ml

Cream-gommage for deep cleansing of skin and pores. Helps peeling off dead cells of epidermis, drains pore, decreases hyperkeratinization effect.

Activates microcirculation and skin cell regeneration procedures, oxygenates the skin.

Ingredients: bio-chelate Gold, Diamond powder, White Chinese clay, Apricot stone pellets, Shea butter.

Jojoba Exfoly Gel - for sensitive skin 250ml / 100ml

Gel-scrub for easy desquamation of dead cells of corneal layer. Activates local microcirculation, hydrates and calms sensitive skin.

Ingredients: Jojoba pellets, Azulene, Aloe-gel, Panthenol.

Pearl Buffing Cream - for normal and combination skin 250ml / 100ml

Enzyme pearl scrub without fatty additives. Deeply cleanses skin and pores, activates microcirculation, lightens the skin, decreases hyperkeratinization effect. Facilitates mechanic cleansing procedure.

Ingredients: Mango, Papaya and Passion Fruit extracts, Olive pellets, Fruit amino acids.

Fruit Enzyme Scrub - for hyper-pigmented skin 150ml

Enzyme cream scrub for deep skin cleansing with ascorbic phosphate (stable form of vitamin C). Combines the effect of mechanic and chemical peeling. Removes dead cells, freshens the skin and calms irritations.

Ingredients: Mango, Papaya and Passion Fruit extracts, vitamin C, Jojoba pellets.

Foaming Phyto Peel - for oily skin and/or acne skin 250ml / 100ml

Foaming scrub for deep skin cleansing. Removes dead cells, drains pores, and optimizes sebaceous glands activity. Facilitates comedone extraction. Bears pronounced anti-inflammatory effect. Removes hyperkeratosis follicular is appearance.

Ingredients: Tea Tree and Cyprus ether oils, Green Tea extract, Wheat proteins, Jojoba pellets, Washing agents.

Lotions and toners

Vita Mineral Toner - for all skin types 500ml / 200ml

Toning, hydrating and cleansing toner. Optimizes microelement exchange in the skin, increases its turgor and elasticity. Preserves optimal moisture level in the epidermis.

Ingredients: Fruit acids complex, Aloe-gel, Panthenol, Hamamelis, Sea Nucleoprotein, Chamomile, Mimosa and Wheat germ extracts.

Gourmet Toner - for all skin types 200ml

Toning lotion for delicate skin cleansing. Hydrates, calms and regenerates epidermis, increasing its turgor and elasticity.

Ingredients: Mimosa, Hamamelis and Chamomile extracts, Aloe-gel.

Embryo Plant Skin Elixir - for sensitive skin 500ml / 200ml

Toning lotion. Efficiently cleanses and hydrates the skin, at the same tie soothing and regenerating it. Strengthens microvasculature vascular walls.

Ingredients: Wheat germ, Hamamelis, Farine and Nettle extracts, vitamin C, Panthenol, Silk amino acids.

Anti-Irritant Lotion - for sensitive, allergy-prone skin 200ml / 100ml

Hypoallergenic, alcohol-free soothing lotion. Perfume-free. Delicately cleanses irritated skin and calms it. Strengthens blood vessel walls, regenerates the skin.

Ingredients: Azulene, Hamamelis, Arnica and Rosemary extracts, Phytohormones, Sorbitol.

Banana Refreshing Toner - for dry and dehydrated skin 500ml / 200ml

Freshening and toning toner for dry and dehydrated skin. Calms irritation, hydrates and regenerates. Optimizes microelement exchange in the skin.

Ingredients: Aloe-gel, Banana, Hamamelis, Wheat germ and Chamomile extracts.

Lemon Lotion - for hyper-pigmented skin 500ml / 200ml

Clarifying toner with phitoenzymes, fruit acids and ascorbic phosphate. Peels off dead cells, decreases hyperkeratosis appearance.

Facilitates penetration of bioactive substances into deep skin layers.

Ingredients: Passion Fruit, Lemon and Grapefruit extracts, Fruit acid complex, Ascorbic Phosphate, Hamamelis.

Botanical Clarifying Astringent - for oily skin and/or acne skin 500ml / 200ml

Cleansing and toning lotion. Deeply cleanses the skin from impurities and skin fat, anti-inflammatory, bactericidal and pore refining effect.

Activates regeneration of epidermis keratin cells, removes extensive greasiness, and optimizes sebaceous glands activity.

Ingredients: Eucalypt, Green Tea, Iris root, Calendula, Chamomile, Mint and Sponge extracts, Camphor, Menthol, Alum, Salicylic and Lemon acids.

Massage cosmetics

Essential Massage Balsam - for all skin types 250ml

Lightweight tender cream with ether oils and rejuvenating biocomplex. Provides deep oxygenation of tissues stimulates local microcirculation, strengthens skin immunity. Has relaxing effect on the organism.

Ingredients: Aquaftem, Peptidoglycans, Retinol, ASC III complex, Phytantriol, vitamin B complex, Raspberry extract, Avocado, Sesame and Apricot oils, Geranium Lavender and Mint ether oils.

Massage Souffle - for all skin types 150ml

Nourishing, antioxidant and relaxing massage cream with natural chocolate. Perfume-free. Provides excellent, sliding effect, instantaneously soothing the skin, relieving irritation and exfoliation. Renders general relaxing effect to the organism.

Ingredients: Cocoa, Milk proteins, Soy and Cocoa oils, Mimosa, Arnica, Cypress, Solomon's seal and Horse-Chestnut extracts, vitamin E.

Golden Glow Massage Cream - for all skin types 300ml

Revitalizing, nutritious, relaxing massage cream. Lightweight texture provides maximum penetration of biologically active substances into deep areas of epidermis. Secures smooth sliding, without greasy film on the skin. Activates protein, lipid and carbohydrate metabolism in the skin. Recovers its barrier function and hydro balance, relieves edemas.

Ingredients: bio-chelate Gold, Phytantriol, Rice nutripeptides, Wheat germ oil, Olive, Arnica and Shea oils.

Marine Collagen Cooling Gel - for all skin types 150ml

Cooling massage gel with sea collagen. Activates blood circulation processes, intensively hydrates the skin. Contributes to withdrawal of toxins, smoothes and nourishes. Designed for lymphatic drainage massage.

Ingredients: Sea Collagen and Elastin, Brown Algae, Spirulina, Menthol, Hamamelis, Aloe-gel, Arnica and Calendula extracts, Silicone oil.

Invigorating Massage Oil - for all skin types 200ml

Cocktail of natural massage oils, non-comedogenic. Provides smooth sliding, without greasy film on the skin. Designed for most sensitive skin, disposed to allergic reactions.

Ingredients: Apricot, Chamomile, Avocado, Sesame, Calendula oils and Jojoba wax.

Silkening Massage Cream - for normal and dry skin 250ml

Tender nourishing massage cream for dry and sensitive skin. Non-comedogenic, recovers skin barrier functions, regenerates, smoothes and hydrates. Activates protein, lipid and carbohydrate metabolism in the skin.

Ingredients: Silk amino acids, Retinol, Panthenol, Tocopherol, Sesame, Avocado, Apricot and Jojoba oils.

Firming Massage Cream - for mature atonic skin 150ml

The lifting cream is designed for plastic massage. Possesses extraordinary regenerating effect. Activates protein, lipid and carbohydrate metabolism in the skin. Recovers the skin barrier functions and hydro balance. Provides evident lifting effect.

Ingredients: Milk peptide complex (MPC), Apricot and Chamomile oils, Aquaftem, Tocopherol (vitamin E), Blue-green algae, Allantoin.

Mandarin Massage Cream - for hyper pigmented skin 150ml

Nourishing whitening massage cream. Blocks tyrosine's ferment activating melanin synthesis. Prevents from appearance of new pigment spots.

Ingredients: Avocado oil, Fruit acids complex, Mandarin extract, vitamin C, Tocopherol.

Calming Massage Phyto Milk - for oily skin and/or acne skin 250ml

Lightweight, tender massage cream for oily or problem skin. Provides excellent sliding effect, instantaneously calms the skin, calms inflammation, and produces antiseptic effect.

Ingredients: Allantoin, Panthenol, Calendula and Chamomile oils, Camphor, Tea Tree and Mint ether oils, vitamin E, Algae, Willow and Shebula extracts.

Masks

Vita Pure Essential Mask - for all skin types 250ml / 100ml

Calms sensitive, irritated skin. It is an "emergency" mask in case of contact dermatosis-type reactions. Strengthens capillars, smoothes, nourishes and hydrates the skin.

Ingredients: Zinc oxide, Kaolin, Allantoin, Panthenol, Aloe-gel, Wheat proteins, Silk amino acids, Carrageen, Cucumber extract, Sesame, Peach and Almond oils, vitamine E.

Hydro Balancing Algae Mask - for all skin types 250ml / 100ml

Hydro balancing mask with algae. Recovers natural skin hydrating factor and moist content in the derma. Recovers skin elasticity and flexibility, stabilizes microelement content, and activates energy consuming biological processes.

Ingredients: Micronized sea algae, Sea collagen, Nucleoproteins (DNA), Spirulina, Bisabolol, Allantoin, Panthenol, and Hamamelis.

Pro Cleansing Gel Mask (PH 10) - for all skin types 250ml

Warming gel. It is designed for skin preparation for mechanic cleansing. Replaces vaporization procedure. Softens comedos, skin with hyperkeratinization areas, facilitates comedo extraction procedure.

Ingredients: Aloe-gel, Urea, Panthenol, Bisabolol, Calendula and Lemon extracts.

Multiactive Oxygen Mask - for all skin types 250ml

Oxygen nourishing and hydrating immunomodulatory mask. Stimulates cell renovation, activates cell respiration and collagen synthesis. Strengthens blood vessel walls, contributes to rapid recovery of main skin functions.

Ingredients: Casein, Oligoproteins, Aquaftem, Retinol, vitamins C and E, ASC III complex, Hyaluronic acid, Primrose, Green Tea and Cucumber extracts, Hamamelis, Chlorophyll, Menthol.

Mocha Mask - for all skin types 150ml

Nourishing chocolate lifting mask. Removes edemas, Lifts facial muscles, and removes small wrinkles. Possesses powerful antioxidant and relaxing effect.

Ingredients: Cocoa, Cocoa oil, Milk proteins, Bentonite, Mimosa and Filbert extracts, Phytodermina Lifting ®.

Alginate Chocolate Mask - for all skin types 30g

Alginate nourishing and cleansing mask. Designed for oily and combination skin with signs of "fatigue" and atrophy. Deeply nourishes and hydrates, inundates the skin with necessary microelements. Possesses anti-stress and antioxidant qualities.

Ingredients: Alginate, Cocoa and Licorice extracts, vitamin E.

Golden Glow Peel-off Mask - for all skin types 500ml

Exclusive rejuvenating Golden Mask. Actively hydrates, inundates the skin with gold ions, activates collagen synthesis, smoothes wrinkles, and improves the skin structure and color. Applied to the special Face Applicator.

Ingredients: bio-chelate Gold, Asian Centella, Lanoline alcohol.

Face Applicator

Non-woven tissue for applying of Golden Glow Peel-off Mask.

Golden Glow Alginate Exfoliating Mask - for all skin types 30gr

Enzyme alginate mask. Designed for deep skin cleansing. Combines the effects of mechanic and chemical peeling. Does not irritate the skin, hydrates and inundates deep epidermis layers with rare microelements necessary for cell division. Prepares the skin for more efficient penetration of bio-active substances included into the complex therapy products.

Ingredients: Pine-apple and Papaya enzymes, Fruit amino acids, Laminar extract, Alginate

Anti-Irritant Mask - for sensitive, allergy-prone skin 150ml / 50ml

Sedative cooling paste-like mask. Instantaneously relieves irritations, normalizes water-alkaline balance and local blood circulation. Contributes to cell regeneration, not preventing from skin exfoliation process.

Ingredients: Zinc oxide, Kaolin, Panthenol, Chamomile, Hamamelis and Rosemary extract, Silk proteins and Farina oligoproteins, Menthol, Arnica oil.

Azu-Gel Soothing Mask - for sensitive skin 250ml / 100ml

Azulene softening and hydrating mask for sensitive skin. Strengthens blood vessel walls, decreases impaired blood circulation in the skin. Calms the skin, nourishes and strengthens skin.

Ingredients: Azulene, vitamin C, microcapsules, with vitamins A and E, Aloe-gel, Panthenol, Hamamelis, Wheat germ proteins.

Fresh Plant Cells Nutrient Mask - for sensitive and dry skin 250ml / 100ml

The cream mask is designed for nourishing of very dry and sensitive skin with sebum formation reduction and broken epidermal barrier. Activates lipid exchange in the skin, recovers barrier functions, softens and smoothes small mimic wrinkles.

Ingredients: Apricot and Avocado oils, Wheat germ proteins, Farina and Cucumber extracts, Retinol, Tocopherol, vitamin C (stable form).

Oligoprotein Lifting Mask - for mature and dry skin 250ml / 100ml

Active nourishing lifting mask. Contributes to quick recovery of the basic skin functions. Nourishes, hydrates, tones and activates energy consuming biochemical processes in the skin cells, relieves edemas and models facial contours.

Intense Revitalizing Mask - for mature and dry skin 250ml

Active revitalizing and nourishing mask for dry and sensitive skin with sebum formation reduction and broken epidermal barrier. Activates formation of collagen and elastin, lipid exchange in the skin. Smoothes small wrinkles.

Ingredients: Milk whey peptides, Retinol, Sea collagen and elastin, Olive and Cocoa oil.

DNA Anti-Aging Mask - for oily and combination mature skin 250ml/ 100ml

Whitening and mask with lifting effect. Reduces the appearance of pores. Designed for mature oily and porous skin. Excellently freshens and hydrates, smoothes small wrinkles, relieves edemas and irritations, and models facial contours.

Ingredients: Albumin, Sea and Phytonucleoproteins (DNA), Milk and Wheat proteins, Jojoba and Almond oils.

Protein Powder Mask - for mature and atonic skin 150ml

Active modeling lifting mask. Models facial contours, removes double chin, actively smoothes wrinkles. Deeply tones facial muscles, stimulates lymphatic drainage, relieves edemas, and activates blood circulation. Dissolved with the special preparation Firming Solution.

Ingredients: Albumin, Calamine, Carboxymethyl-cellulose, Spirulina, Blue-green algae, Milk peptide complex (MPC).

Firming Solution 200ml

Solvent for Protein Powder Mask, activating bio-active substances of the mask. Renders plasticizing effect to the mask.

Ingredients: Carrageen, Chamomile extract, organic solvents.

Papain Mask - for hyper pigmented skin 150ml

Powder whitening mask. Renders whitening effect after the first procedure. Dissolved with Lemon Lotion.

Ingredients: vitamin C, Papain, Mannitol, Bromeline, Zinc oxide and Zinc peroxide.

Biomineral Cleansing Mask - for oily and combination young skin 250ml/ 100ml

Antiseptic mask with modeling effect. Reduces the appearance of pores. Is used at oily seborrhea. Decreases the activity of sebaceous glands. Relieves inflammations, hydrates, narrows pores and calms the skin. Contributes to cell regeneration.

Ingredients: Betonies, Green Tea and Iris root extracts, Aloe-gel, Panthenol, Tocopherol, Alum.

Antiseptic Clay Mask - for oily skin of acne skin 250ml/ 50gr (5gr x 10 sachets)

Powder mask for treating acne eruption and oily seborrhea. Possesses pronounced anti-inflammatory and anti-comedogenic effect. Decreases sebaceous glands activity. Relieves inflammatory processes, narrows pores, and contributes to cell regeneration. Dissolved with water or herb tea.

Ingredients: White clay, Calamine, Aluminum Sulfate, Bio-serum, Camphor, Lemon acid.

Active Anti-Acne Mask - for acne skin 50ml/ 50gr (5gr x 10 sachets)

Active resolving powder mask for acne eruption treatment. Possesses keratolytic effect, decreases sebaceous glands activity, and activates local blood circulation and local metabolism. Dissolved with boiled water or hydrogen dioxide.

Ingredients: Zinc oxide, Sponging, Mint, Sage, White clay.

Concentrates and sera

Anti-Stress Bio Complex 50ml - for all skin types 250ml/ 150ml

Anti-stress bio-complex. Clams irritated skin, relieves stress, renders general relaxing effect to the organism.

Ingredients: Calendula, Chamomile and Sweet Almond oils, Mint ether oil, Menthol, Aloe-gel, Panthenol.

Transactive O2 Serum - for all skin types 40ml/ (4gr x 10 sachets)

Oxygen serum with geranium ether oil. Intensively inundates the skin with oxygen, activates basic bio-chemical processes, and stimulates collagen synthesis. Contributes to complete intake of bio-active substances, rejuvenates the skin. Contributes to recovery and strengthening of local immunity.

Ingredients: Aquaftem, Azulene, Peptidglycans, Linoleic acid, Tocopherol, Geranium oil.

Marine Phyto Serum - for all skin types 30gr

Active hydrating serum with sea ingredients. It is instantaneously absorbed, clams the skin, and inundates it with microelements. Strengthens blood vessel walls, activates blood circulation, and returns skin elasticity.

Ingredients: Sea collagen and Algae, Hyaluronic acid, Sea nucleoproteins (DNA), Spirulina, Aloe-gel, Panthenol, Horse Chestnut and Cucumber extracts, Hamamelis, Phytodermina Lifting® complex.

Transdermal O2 System - for all skin types 30grl

Active transepidermal oxygen concentrates with vitamin micro pellets. It is instantaneously absorbed, calms the skin, and inundates it with moisture. Strengthens blood vessel wall, activates blood circulation. Possesses anti-allergic and anti-inflammatory effect.

Ingredients: Aquaftem, micro pellets with vitamins A and E, Sea nucleoproteins (DNA) and collagen, Hyaluronic acid and Aloe-gel.

Golden Glow Retexturizing Booster- for all skin types 50ml/ 15ml

Super active bio-active substances concentrate, stimulating recovery processes in damaged cells. Deeply inundates the skin with gold ions, oxygen, relieves irritation. Secures regeneration of cell membranes, synthesis of III type collagen, rejuvenating all skin layers.

Ingredients: bio-chelate Gold, Hyaluronic acid, Camosine, Rice nutripeptides, Asian Centella, Tocopherol, Ameliox bio-complex, Botox alternative.

Oxygen Serum - for all skin types 15ml

Super active oxygen serum with high Aquaftem concentration - 50%

Azulene Soothing Emulsion - for sensitive skin and cuperose skin 30ml

Emulsify serum for sensitive skin, maladaptive to changing meteorological conditions and prone to allergic reactions

Ingredients: Azulene, Panthenol, Allantoin, Aloe-gel, Horse Chestnut extract, Tocopherol, Sesame, Chamomile and Apricot oils.

DNA & MPC Activator - for mature atonic skin 40ml (4ml x 10 sachets)

Active lifting concentrate. Lifts hydrates and nourishes the skin. Smooths wrinkles, models facial contour, provides mechanical lifting effect for several hours. Oxygenates skin cells.

Ingredients: Milk peptide complex (___), Aquaftem, Guarana, Sea algae and Nucleoproteins (DNA) extracts.

Oligoproteine Anti-Age Hydro system - for mature skin During iontophoresis use at anode 40ml (4ml x 10 sachets)

Activates cell receptors, accelerating tissue reproductive ability. Renders general rejuvenating effect, recovering blood circulation and collagen synthesis. Secures cell membrane regeneration and optimal skin hydro balance.

Ingredients: Farina oligoproteins, Hyaluronic acid, Oxygen Bio-complex, vegetal nucleoproteins, germ phyto-cell proteins.

Multiactive Anti-Age Complex - for mature skin 30ml

Multiactive rejuvenating complex. Super active preparation stimulating recovering processes in damaged cells. Deeply oxygenates the skin, relieves irritation. Secures cell membrane regeneration and optimal skin hydro balance.

Ingredients: Polylift® - complex of lifting phyto-agents, Retinol, micropellets with Hyaluronic acid, Hamamelis and Cucumber extracts, Panthenol and Tocopherol.

Reguvenate Active Serum - for mature and dehydrated skin 30ml

Rejuvenating active nutritious serum. Contributes to collagen and elastin synthesis, optimizes lipid and hydro balance, strengthens the skin and stimulates synthesis of proteins, ceramides and other necessary substances. Increases skin elasticity.

Ingredients: ASC III complex - bio-stimulator of collagen and elastin cell synthesis, Retinol, Phytoceramides, vitamin _ (Ascorbyl Phosphate), Tocopherol, Avocado, Apricot and Sweet Almond oils.

Lifting Active Serum - for mature and atonic skin 15ml

Active lifting serum. After application for the skin secures instantaneous and extended (3-4 hours) lifting effect. Recommended to be applied under cream.

Ingredients: Chitosan, Glycolic Acid, MDI® complex

Whitening Serum - for hyper pigmented skin 15ml

Whitening serum with Fruit acids complex. Deeply hydrates the skin, contributes to collagen and elastin synthesis. Accelerates epidermis cell renovation processes.

Ingredients: fruit acids complex.

Vit "C" Concentrate - for sensitive and Hyde pigmented skin 40ml (4ml x 10 sachets)

During iontophoresis use at anode.

Concentrate of vitamin C stable form (ascorbic phosphate). Activates collagen synthesis and derma cell division process. Blocks melanin synthesis.

Ingredients: fruit acids complex, vitamin _, Mango, Papaya and Passion Fruit extracts, Panthenol.

Balancing Phyto Serum - for oily skin and/or acne skin 40ml (4ml x 10 sachets)

During iontophoresis use at anode.

Anti-inflammation and bactericidal complex, enhancing the effect of procedures for oily and problem skin.

Ingredients: Iris root, Chamomile and Calendula extracts, Panthenol, Aloe-gel, and Hamamelis.

Blemish Fix Applicator - for acne skin 10ml

Antiseptic applicator with masking pigments. Special preparation with anti-inflammatory and antibacterial additions for local treatment of inflamed skin elements.

Ingredients: Salicylic Acid, Colloid Sulfur, Camphor, Allantoin, Iris root, Zinc oxide, tonal pigments.

Peeling cosmetics

Phyto Peeling Mask 150ml

Powerful preparation for treatment of complicated acne eruption. Possesses antiseptic, resorbable and keratolytic effect. Activates local blood circulation and metabolism, exfoliates keratin skin cells, decreasing hyperkeratosis. Resolves deep infiltrates and stagnant phenomena at acne, revitalizes all derma layers, and increases local immunity. Contributes to collagen and elastin synthesis.

Ingredients: Spongy, Tea Tree oil, Aloe-gel, Glycolic Acid, Menthol, Cleansing agents.

Active Phyto Complex 100ml

Unique keratolytic and antiseptic preparation for treatment of sub acute acne and deep hypodermic infiltrates. Powerful keratolytic complex included into the preparation allows applying hyperkeratosis and cicatrice skin deformation removal procedures simultaneously with treatment of complicated acne eruption.

Ingredients: Zinc, Iris, Salicylic and Glycolic acids, Saponin.

Activator 125ml

Special keratolytic lotion for deep skin exfoliation. Possesses powerful antiseptic effect. Used in therapy of deep skin treatment.

Ingredients: Bootleg gasoline tincture, Salicylic Acid, Alum, Menthol.

AHA Solution 20%. For surface peeling 100ml

Ingredients: Glycolic Acid.

AHA Solution 35%. For medium peeling 100ml

Ingredients: Glycolic Acid.

AHA Solution 50%. For deep peeling 100ml

Ingredients: Glycolic Acid.

AHA Neutralizer Foam. 200ml

Neutralizer of glycolic acid action. Instantaneously clams the skin, normalizing acid-base balance.

Ingredients: Aloe-gel, Mint extract, Sodium Bicarbonate.

Face care creams and gels

Hydro Balancing Cream - for all skin types 100ml /50ml

Hydro balancing cream. Easily absorbed into the skin without oily film. Inundates deep derma layers with necessary microelements, activates metabolism and water balance. Softens and calms the skin, rejuvenating it.

Ingredients: Chamomile and Calendula oils, Sea Collagen and Nucleoproteins (DNA), Hyaluronic acid, Aloe-gel, Allantoin, Chamomile and Horse Chestnut extracts, Tocopherol.

Moisturizing Mist - for all skin types 50ml

Tender and lightweight cream-serum. Instantaneously absorbed into the skin with the sense of comfort. Activates tissue respiration process, recovers metabolic balance in skin cells, and secures optimal hydro balance.

Ingredients: Aquaferm, Phytantriol, Hyaluronic acid, Sea Collagen, Raspberry extract, Tocopherol.

Elite Cream - for all skin types 100ml

Nourishing chocolate lifting cream for any skin type with atrophy signs and "weary" face syndrome. Perfectly softens hydrates, protects from cold and wind, regenerates and clams the skin. Lifts up face muscles and neutralizes free radicals.

Ingredients: Phytodermina Lifting®, Mimosa, Filbert and Horse Chestnut extracts, Cocoa, Amica and Almond oils, Cocoa, Milk proteins, vitamin _.

Golden Glow Radiance Cream - for all skin types 100ml

Rejuvenating nourishing and hydrating cream. Awakes genetic "memory" of cells with gradually reduced metabolism processes in the course of time, returns them the functional activity and life rhythm of young cells. Activates protein synthesis and skin renovation process.

Ingredients: bio-chelate Gold, Hyaluronic acid, Rice nutripeptides, Ameliox.

AHA Active Gel 10% - for all skin types 100ml / 50ml

Active gel with fruit acids (10% concentration). Efficiently whitens hydrates and nourishes the skin. Activates exfoliation of epidermis keratin cells, thus contributing to smoothing of skin relief and regeneration processes.

Ingredients: fruit acids complex.

Anti-Irritant Cream - for sensitive allergy-prone skin 100ml / 50ml

Lightweight consistency cream with increased content of anti-irritant substances. Calms irritated skin, cooling it and contributing to cell regeneration.

Ingredients: Panthenol, Aloe-gel, vitamins A, E and F, Bisabolol, Menthol and Allantoin.

Bio Stimule Gel - for dehydrated and sensitive skin 100ml / 50ml

Biostimulating oxygen gel. Contains transdermal oxygen carrier. Activates cell respiration process, slightly cooling, soothing and nourishing the skin.

Ingredients: Aquaftem, Chamomile oil, Allantoin, Panthenol, Tocopherol, Cucumber extract, Menthol.

24h Nourishing Cream - for normal and combination skin 50ml

Protective nourishing and hydrating cream. Increases skin elasticity. Strengthens blood vessel walls, decreases skin sensitivity to aggressive environmental factors. Creates matte effect. It is a perfect foundation primer.

Ingredients: Apricot and Sesame oils, Sea Collagen and Elastin, Retinol, Tocopherol, Arnica and Cocoa oils, Farina oligoproteins, Phyto-nucleoproteins.

Golden Glow Anti-Wrinkle Cream - for mature wrinkled skin 50ml

Rejuvenating lightweight consistency cream for mature skin care for wrinkle prevention and correction. It may be used in any time of day.

Ingredients: bio-chelate Gold, Ameliox, Hyaluronic acid, Rice nutripeptides, Asian Centella, Carnosine, vitamin E, Shea butter, Olive and Wheat germ oils.

Regenerating Night Cream - mature and dry skin 50ml

Regenerating night cream. Possesses rejuvenating effect. Contains a complex of active bio-stimulating additives, able to activate skin cell metabolism and energy consuming reactions within a short period. Recovers local immunity.

Ingredients: ASC III complex - a rejuvenating complex, Shea butter, Avocado and Sesame oils, Milk proteins, Guarana, Raspberry, Green Tea extracts and plant germ DNA, Cocoa oil, Aloe-gel.

Peptide Lifting Cream - for mature atonic skin 100ml / 50ml

Hydrating and nourishing lifting cream-gel. Possesses rejuvenating effect, recovers metabolic balance, secures optimal hydro balance, and increases skin elasticity.

Ingredients: Polylift®, Carrageen, Sea Collagen, Hyaluronic acid, Wheat proteins, Allantoin, Milk peptide complex (MPC), Aquaftem, Panthenol, Farina oligoproteins.

Citrus Revitalizing Cream - for mature skin 100ml / 50ml

Rejuvenating nourishing and hydrating cream. Awakes genetic "memory" of cells with gradually reduced metabolism processes in the course of time, returns them the functional activity and life rhythm of young cells. Activates collagen and elastin synthesis and skin renovation process.

Ingredients: vitamin C (stable form), ASC III complex - bio-stimulator of collagen and elastin synthesis, MPC - Milk peptide complex, Linolenic acid, Tall oil, Jojoba wax, Tocopherol.

Lifting Night Cr_ am - for mature atonic skin 30ml

Night nourishing and hydrating lifting cream. Activates rejuvenation processes of all epidermis layers, softens and regenerates cells, strengthens the skin. Recovers local immunity.

Ingredients: Chitosan, Glycolic acid, Cocoa oil, MDI® complex.

Firming Gel - for mature atonic skin 150ml

Lifting gel with pronounced toning, regenerating and hydrating effect. Strengthens skin tissues, actively nourishes and hydrates.

Ingredients: Carrageen, Hamamelis, Panthenol, Aquaftem, Aloe-gel.

Whitening Night Cream - for all skin types with hyper pigmentation 50ml

Night whitening cream with increased content of acids. Designed for young skin with hyperkeratosis.

Ingredients: Glycolic and Milk acids, vitamin C, Actiwhite® complex, Tocopherol and Sunflower oil.

Vit "C" Depigmenting Cream - for mature skin with hyper pigmentation 50ml

Nourishing whitening cream. Does not cause skin irritation. Blocks tyrosine's ferment, activating melanin synthesis in melanocytes. Activates protein synthesis and skin renovation process.

Ingredients: vitamins C and E, Emblic extract, Actiwhite® depigmenting complex, Mannitol, Papain, Bromeline.

Oil Control Phyto Gel - for oily skin and/or acne skin 50ml

Anti-inflammation and hydrating phyto-gel. Optimizes sebaceous glands function, narrows pores, relieves inflammation reactions. Creates matte effect.

Ingredients: extr: Spongy Chamomile, Melissa, Mint, Sage and Passion fruit extracts, Bisabolol.

Botanical Anti-Acne Cream - for acne skin 100ml / 50ml

Anti-inflammation and antiseptic cream with minimum fat content for acne treatment. Relieves inflammations, prevents from complications with the consecutive infections, and slightly exfoliates keratin cells. Optimizes sebaceous glands function, narrows pores, and creates matte effect.

Ingredients: Colloid sulfur, Bisabolol, Allantoin, Tea Tree and Chamomile oils.

Eyelid skin care cosmetics

MPC Eye Cream 100ml/ 30ml

Revitalizing cream for eyelid skin with innovative phyto-additions and bio-active anti-age ingredients. Intensively nourishes and hydrates, recovers skin elasticity, smoothes wrinkles "from inside", relieves irritation.

Ingredients: Milk peptide complex (MPC), vitamins C and E, Hyaluronic acid, Sea Collagen, Jojoba, Sunflower and Sesame oils, Panthenol.

DNA Eye & Throat Gel 100ml/ 30ml

Gel for eyelid, neck and décolleté skin. Cools, relieves irritation, stimulates cell regeneration processes. Actively nourishes hydrates and strengthens the skin.

Ingredients: Sea algae and Collagen, Azulene, Panthenol, vitamin C, Aloe-gel, Cucumber and Hamamelis extracts.

Golden Glow Eye Mask 100ml

Recovering eyelid skin mask. Smoothes wrinkles, relieves edemas and dark circles. Stimulates cell regeneration processes, actively nourishes, hydrates and strengthens eyelid skin. Improves skin structures, activates local microcirculation. May be used for caring for neck and décolleté skin.

Ingredients: bio-chelate Gold, Hyaluronic acid, Camosine, vitamin C, Ameliox, Panthenol.

Golden Glow Eye Lift Repair Cream 15ml

Nourishing, hydrating and revitalizing new generation lifting cream for eyelid skin. Smoothes wrinkles, relieves dark circles, edemas, strengthens eyelid skin.

Ingredients: Rice and Wheat germ proteins, Bio-gold, Hyaluronic acid, Asian Centella extract, Olive and Wheat oils, Shea butter Polylift®.

Revita Lift Eye Mask 100ml/ 30ml

Revitalizing nourishing mask for eyelid skin with lifting effect. Contains powerful nourishing and hydrating complex. Efficiently recovers and tones damages eyelid skin, smoothes small wrinkles, whitens and lifts the skin.

Ingredients: Jojoba wax, Retinol, Tocopherol, micropellets with vitamins A, E and C, Cocoa and Sesame oils, Polylift®, Wheat proteins, Cucumber extract, Carrageen, Hyaluronic acid, Sea Collagen, Aquaftem, Panthenol and fruit acids complex.

Fibronectic Eye Gel Mask 100ml

Gel-like lifting mask for eyelid skin. Relieves dark circles and edemas, smoothes wrinkles. Relieves irritation. Stimulates cell regeneration processes, actively nourishes, hydrates and strengthens eyelid skin. It is applied to the special applicator Eye Pads.

Ingredients: Hamamelis, Aloe-gel, Carrageen, Panthenol, Allantoin, Sea Collagen, Hyaluronic acid, Menthol.

Eye Pads

Non-fibrous tissue pads. Are used for application of Fibronectic Eye Gel Mask.

Eye Lifting Cream SPF8 15ml

Nourishing lifting cream for eyelid skin with sun-protection filters (factor 8). Recommended for day care. It is a perfect foundation primer.

Ingredients: Wheat gem proteins, Carrageen, Tocopherol, Polylift®, Sunflower oil hydrolyzate, sun-protection filters.

Plant Cells Eye Concentrate 40ml (4ml x 10 sachets)

During iontophoresis use at anode.

Powerful nourishing and hydrating concentrate for damaged eyelid skin that lost elasticity. Evens out tone and relief of eyelid skin.

Ingredients: Cucumber extract, Hyaluronic acid, Hamamelis, Wheat germ proteins.

Eye Collagen Mask

Hypo allergic disposable collagen mask. Intensively cares for sensitive eyelid skin, hydrating, softening and nourishing it. Before application wet the mask with cool water or herb tea.

Sun-protection cosmetics

Sun Protective Gel SPF 30 - for all skin types 100ml/ 50ml

Oxygen hypo allergic sun protection cream-gel. Protection factor - 30.

Ingredients: Aquaftem, oil- and water-soluble filters, Allantoin and Panthenol, vitamin E.

Cover Sunblock Cream SPF 50 - for all skin types 50ml

Sun-protection foundation cream. Masks different skin imperfections, protects from harmful influence of sun beams, antioxidant.

Ingredients: sun-protection filters, Tocopherol, micro pigments.

Tinted Sunblock Cream SPF 20+ - for normal and combination skin 50ml

Day-time foundation cream with sun-protection filters (protection factor 20).

Ingredients: sun-protection filters, Tocopherol, micro pigments.

Total Sunblock Anti-Aging Cream SPF 50 - for mature, dry and sensitive skin 50ml

Sun-protection, nourishing and hydrating cream (protection factor SPF 50). Prevents from skin photo-ageing. The cream content makes it full valuable day-care for face and neck skin.

Ingredients: Allantoin, Panthenol, Tocopherol, sun-protection filters.

Lifting Day Cream SPF 15 - for mature atonic skin 50ml

Day-time sun-protection nourishing lifting cream. Prevents from skin ageing, appearance of pigment spots. Smoothes wrinkles, actively lifts the skin, neutralizes free radicals.

Ingredients: Carrageen, Poly lift®, Wheat proteins, Sunflower oil hydrolyzed, Tocopherol, water- and oil-soluble sun-protection filters, Titanium Dioxide.

Whitening Day Cream SPF 50 - for mature and dry hyper pigmented skin 50ml

Whitening day sun-protection cream (protection factor 50). Nourishes, hydrates, neutralizes free radicals, smooths small wrinkles, softens the skin and is a perfect makeup foundation.

Ingredients: Sea Collagen, Hyaluronic acid, Vitamins C and E, Retinol, Phytantriol, sun-protection filters.

Oil Free Corrective Cream SPF 25 - for oily skin or/and acne skin 100ml / 50ml

Foundation sun-protection cream without fat additives for oily and problem skin. Masks skin imperfections, prevents from pigment spot appearance at damaged skin areas (traumatic pigmentation), clams the skin, relieves inflammations.

Ingredients: light-reflecting filters, Bisabolol, Allantoin, Tocopherol, Wheat proteins, Calendula and Chamomile therapeutic oils.

Body care cosmetics

Cleansing products

Chocolate Cleansing Lotion 500ml

Cleansing body lotion. Exfoliates dead cells, decreases hyperkeratosis. Facilitates penetration of bio-active substances into deep skin layers.

Ingredients: Fruit acids complex.

Chocolate Gommage 500ml

Designed for deep skin and pore cleansing. Exfoliates dead cells, activates local microcirculation and skin cell regeneration processes. Facilitates penetration of bio-active substances into deep skin layers.

Ingredients: Cocoa, Lecithin, Milk proteins, Kaolin, Soy and Filbert extracts.

Lympho-Stimulating Enzyme Gel 500ml

Designed for deep skin cleansing, decongestion of epidermis keratin layer, causes light hyperemia and extended tingling effect in deep derma layers, which positively affects blood microcirculation and lymph circulation, thus stimulating metabolism processes. Relieves stagnation and inflammation processes, improves skin structure.

Ingredients: Sponges, Brown algae, Spirulina, Horse Chestnut and Aloe extract, Allantoin, Hamamelis.

Fruit Acids Exfoliant 500ml

Hands and feet scrub. Perfectly removes impurities, dead cells and softens calloused skin of hands and feet. Prepares the skin for instrument procedures.

Ingredients: Fruit acids complex, Mandarin extract, Tea Tree ether oil, Polyethylene pellets.

Hand Sanitizing Gel 500ml

Antiseptic gel for treating cosmetologist's hands and instruments. Pleasant lemon odor will not cause client's negative reaction at contacting with cosmetologist's hands. Does not cause corrosion of metal instruments.

Ingredients: Lemon oil, Menthol, Castor oil hydrolyzed, Alcohol.

Massage cosmetics

Chocolate Massage Lifting Cream 500ml

Chocolate massage cream with anti-cellulite and modeling phyto-substances. Activates microcirculation and lymph circulation, nourishes and hydrates the skin, contributes to withdrawal of toxins, regenerates epidermis cells, softens the skin and lifts muscular tissue. Favorably influences the central nervous system.

Ingredients: Cocoa, Carrageen, Cocoa oil, Lecithin, Milk proteins, Soy and Filbert extracts, Wheat germ proteins, Sesame and Sunflower oils.

ARO Massage Body Oil 500ml

Body massage oil containing oily natural nourishing and ether oils. Provides perfect sliding effect, non-comedogenic, warms up muscle tissue and contributes to blood and lymph circulation. Favorably influences the central nervous system owing to specially combined ether oils complex.

Ingredients: Avocado oil, vitamin E, Camphor, Lemon, Tea Tree, Geranium, Mint, Eucalyptus, Lavender, Cinnamon and Fir ether oils.

Veno-Tone Massage Cream 500ml

Massage cream activating venous and capillary blood circulation. Designed for intensive acupuncture, metabolic and lymph drainage massage of limbs. Provides good sliding, slightly warms up the skin, contributes to recovery of lipid and water skin balance.

Ingredients: Amica oil, Horse Chestnut extract, Menthol, Ascorbic acid.

Masks

Chocolate Lifting Mask 500ml

Chocolate nourishing lifting mask for body skin. Contributes to excretion of slag, deeply hydrates and softens the skin, regenerates epidermis cells, contributes to local microcirculation and lymph circulation. Renders general relaxing influence to the organism. Deeply tones body muscles.

Ingredients: Cocoa, Polylift®, Almond oil, Mimosa and Horse Chestnut extracts, Milk and Soy proteins.

Algae Thermo Mask 500ml

Active anti-cellulite mask with algae extracts for "warm" body wrapping. Activates lipolysis process, blood circulation and excretion of slag and toxins from hypoderm.

Ingredients: Fucus, Camellia, Brown algae, Horse Chestnut and Willow extracts, Chlorophyll, Methyl salicylate, Nicotine (vitamin PP).

Concentrates and sera

Lipolysis Active Concentrate 170ml (17ml x 10 sachets)

Active lipolysis anti-septic serum. Applied locally to problem skin areas. Easily absorbs.

Ingredients: Brown algae, Horse Chestnut, Camellia, Amica and Lemon extracts, L-carnitine, Bioflavonoid, Camphor, Salicylates, Caffeine, Tea Tree ether oil.

Creams and gels

Chocolate Lifting Gel 500ml / 200ml

Active preparation for adipose (edematose) cellulite with concomitant varicosity. Contributes to blood circulation activation, excretion of slag. Decreases fat and muscle tissue density. Decreases edemas, activates lymph circulation. Increases skin tone, relieves weariness sensation.

Ingredients: Fucus, Camellia, Ivy, Horse Chestnut, Sea Collagen, Polylift®, Menthol and Methyl Salicylate.

Chocolate Lifting Cream 500ml / 200ml

Chocolate lifting cream for body skin. Actively nourishes and hydrates the skin, improves its structure, easily absorbs, without oily film. Lifts up muscle tissue and skin.

Ingredients: Cocoa, Milk proteins, Lecithin, Polylift®, Cocoa milk, Soy and Filbert extracts.

Spiruline Module Cream 500ml

Anti-cellulite cream-gel. Calms and cools the skin, simultaneously contributing to lipolysis process, without oily film on the skin surface. Strengthens blood vessel walls, adds comfort sensation.

Ingredients: Brown algae, Camellia, Lemon and Amica extracts, L-carnitine, Bioflavonoid, Salicylates, Camphor, Menthol, Aquaferm, Allantoin, Apricot oil and Tea Tree ether oil.

Keratolysis Cream 500ml / 100ml

Softening keratolysis cream. Designed for removal of callus, plantar callosities etc. Softens the most rough skin. Gradually, layer after layer removes hyperkeratosis areas, calluses, plantar callosities, removes heel desquamation, softens elbow skin.

Ingredients: 20% Carbamide, Glycerin, Sorbitol.

Relaxing Gel 500ml

Relaxing gel with cooling effect. Relieves weariness and tension, creates comfort sensation, cools and softens the skin. Contributes to micro trauma fracture healing. Improves venous flow and relieves limb edemas. Strengthens blood vessel walls.

Ingredients: Panthenol, Menthol, Amica extract, Aloe-gel, Hamamelis, vitamin B complex, Mint ether oil.

After-depilation products

Post Epil Anti-Stress Gel 500ml

Anti-stress cooling and wound healing after-depilation gel. Provides necessary disinfection, instantaneously Calms the skin, hydrates and nourishes it, efficiently removes wax remains. Bio-active phyto-extracts contribute to skin regeneration.

Ingredients: Hamamelis, Tea Tree oil, Aloe Vera, Menthol.

Post Epil Soothing Emulsion 500ml

Softening, soothing and nourishing emulsion lotion for after-depilation skin care. Removes wax remains, contributes to skin regeneration and healing.

Ingredients: Urea, Panthenol, Allantoin, vitamin E, Jojoba wax, Chamomile and Almond oils.

Post Epil Refreshing Body Balm 500ml

Freshening after-depilation balm. Recommended for especially sensitive skin. Contains special complex contributing to hair bulb destruction, which provides retarded growth and thinning of hair stem. Strengthens capillary walls, cools, nourishes, hydrates and Calms the skin. Efficiently removes wax remains.

Ingredients: Horse Chestnut, Ivy and Fucus extracts, Panthenol, Allantoin, Aloe-gel, Chamomile oil, Papain, Bromeline, Mannitol.

WAX Remover 1000ml

Special cleanser for equipment, instruments and depilation room in beauty salons. Efficiently removes depilation wax, possesses pleasant lemon fragrance.

Should not be used to cleansing wooden surfaces!



Home care products

Honey Slimming Gel 200ml

Anti-cellulite gel with highly-concentrated active ingredients. It is easily absorbed into the skin, contributes to lipolysis processes, activation of local metabolism and withdrawal of toxins. Normalizes tissue blood circulation, and intensively hydrates the skin.

Ingredients: Algae, Asian Centella, Lemon, Nettle extracts, Honey proteins, L-carnitine, Bioflavonoids, Panthenol, Caffeine, Salicylates.

Avocado Body Balsam 200ml

Nourishing balm for body skin care with natural oils. Removes skin dryness, without oily unpleasant film on the skin surface, contributes to epidermis cells regeneration and revitalization, increases the skin elasticity and softness.

Ingredients: Avocado, Sweet Almond and Sunflower oils, Jojoba wax, Allantoin, Panthenol, vitamin E and Carbomid.

Apricot Body Scrub 200ml

Foaming shower scrub with olive and apricot stones pellets. Perfectly removes surface impurities, dead epidermis keratin cells, contributes to local blood circulation activation. Does not dry the skin owing to beeswax component.

Ingredients: Amphoteric surface active agents, Apricot and Olive pellets, Beeswax.

Silky Smooth Soap 200ml

Hypo-allergic soap for men and women intimate care (Intime Care). Softly cleanses and disinfects derma and skin mucous membranes. Possesses antifungal, wound healing and sedative qualities. Perfect deodorant.

Ingredients: Amphoteric surface active agents, Nasturtium, Calendula, Chamomile and Sage extracts, Menthol.

Silky Smooth Cream 100ml

Tender hypo-allergic cream for hygienic care of the skin and skin mucous membranes. Designed both for women and men (Intime Care). Possesses necessary antiseptic, antifungal, wound healing and sedative qualities. Absorbs instantaneously, not leaving sense of discomfort.

Ingredients: Allantoin, Nasturtium extract, Cocoa oil, Hyaluronic, Silicone oil.

Bathroom products:

- Nutritious Lotions.
- Shower foams.
- Hands and feet Foam and Sugar Scrubs.

| SCENT & PRODUCT NAME | LOTIONS | SHOWER FOAM | FOAM SCRUBS | SUGAR SCRUBS |
|------------------------|---------------|-------------|-------------|--------------|
| FOR MEN | 200ml | 200ml | - | - |
| BLACKCHERRY & HAZELNUT | 200ml / 100ml | 200ml | - | 300ml |
| COCONUT & VANILLA | 200ml / 100ml | 200ml | - | 300ml |
| BROWN SUGAR & CARAMEL | 200ml / 100ml | - | 200ml | 300ml |
| MILK & HONEY | 200ml / 100ml | 200ml | - | 300ml |
| PEAR & CINNAMON | 200ml / 100ml | 200ml | - | - |
| PINEAPPLE & MELON | 200ml / 100ml | 200ml | - | - |
| STRAWBERRY & YOGURT | 200ml / 100ml | - | 200ml | - |
| SPARKLING VANILLA | 200ml / 100ml | 200ml | - | - |
| BLOOMING PARADISE | 200ml / 100ml | 200ml | - | - |

